

LNPEP Rabbit pAb

货号: **AYP19883**

产品信息

反应	Human,Mouse,Rat
宿主	Rabbit
克隆性	Polyclonal
预测反应	
应用	WB IHC
推荐浓度	WB: 1:100 - 1:500 IHC: 1:50 - 1:200
理论分子量	115kDa/117kDa
实测分子量	165KDa
形式	Liquid
保存条件	Store at -20°C. Avoid freeze / thaw cycles. Buffer: PBS with 0.01% thiomersal,50% glycerol,pH7.3.
偶联物	Unconjugated
阳性对照	Mouse brain, Rat brain
细胞定位	Cell membrane,Secreted,Single-pass type II membrane protein
纯化	Affinity purification

抗原信息

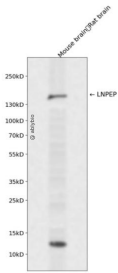
抗原信息	Recombinant fusion protein containing a sequence corresponding to amino acids 1-110 of human LNPEP (NP_005566.2).
序列	MEPFTNDRLQLPRNMIENSMFEEEPDVVDLAKEPCLHPLEPDEVEYEPGRSRLLRGLGEHEMEEDEEDYESSAKLLGMSFMNRSSGLRNSATGYRQSPDGACSVPSART

靶点信息

研究背景	This gene encodes a zinc-dependent aminopeptidase that cleaves vasopressin, oxytocin, lys-bradykinin, met-enkephalin, dynorphin A and other peptide hormones. The protein can be secreted in maternal serum, reside in intracellular vesicles with the insulin-responsive glucose transporter GLUT4, or form a type II integral membrane glycoprotein. The protein catalyzes the final step in the conversion of angiotensinogen to angiotensin IV (AT4) and is also a receptor for AT4. Alternative splicing results in multiple transcript variants encoding different isoforms.
------	--

基因ID	4012
基因名	LNPEP
Swiss	Q9UIQ6
别名	LNPEP;CAP;IRAP;P-LAP;PLAP

产品验证



Western blot analysis of LNPEP expressed in Mouse brain, Rat brain using LNPEP Rabbit pAb at 1:1000. Secondary antibody: HRP Goat Anti-Rabbit IgG (H+L) at 1:5000. Lysates/proteins: 30ug per lane. Blocking buffer: 5% non-fat dry milk in TBST. Detection: ECL Enhanced Kit. Exposure time: 120s.

实验步骤

访问官网浏览详情: www.ablybio.cn