

BYSL Rabbit pAb

货号: **AYP19874**

产品信息

反应	Human,Mouse,Rat
宿主	Rabbit
克隆性	Polyclonal
预测反应	
应用	WB IHC IF/ICC
推荐浓度	WB: 1:500 - 1:2000 IHC: 1:50 - 1:100 IF/ICC: 1:50 - 1:100
理论分子量	49kDa
实测分子量	49kDa
形式	Liquid
保存条件	Store at -20°C. Avoid freeze / thaw cycles. Buffer: PBS with 0.01% thiomersal,50% glycerol,pH7.3.
偶联物	Unconjugated
阳性对照	HeLa,Jurkat,A-549,BxPC-3,Mouse testis,Mouse lung,Rat testis,Rat lung
细胞定位	cytoplasm,cytosol,nucleolus,nucleoplasm
纯化	Affinity purification

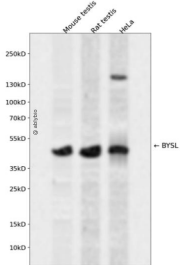
抗原信息

抗原信息	Recombinant fusion protein containing a sequence corresponding to amino acids 120-280 of human BYSL (NP_004044.3).
序列	HAEEVVDPEDERAIEMFMNKNPPARRTLADIIMEKLTEKQTEVETVMSEVSGFMPQLDPRVLEVYRGVREVLSKYRSGKLPKAFKIIPALSNWEQILYVTEPEAWTAAAMYQATRIFASNLKERMAQRFYNLVLLPRVRDDVAEYKRLNFHLYMALKKAL

靶点信息

研究背景	Bystin is expressed as a 2-kb major transcript and a 3.6-kb minor transcript in SNG-M cells and in human trophoblastic teratocarcinoma HT-H cells. Protein binding assays determined that bystin binds directly to trophinin and tastin, and that binding is enhanced when cytokeratins 8 and 18 are present. Immunocytochemistry of HT-H cells showed that bystin colocalizes with trophinin, tastin, and the cytokeratins, suggesting that these molecules form a complex in trophoctoderm cells at the time of implantation. Using immunohistochemistry it was determined that trophinin and bystin are found in the placenta from the sixth week of pregnancy. Both proteins were localized in the cytoplasm of the syncytiotrophoblast in the chorionic villi and in endometrial decidual cells at the uteroplacental interface. After week 10, the levels of trophinin, tastin, and bystin decreased and then disappeared from placental villi.
基因ID	705
基因名	BYSL
Swiss	Q13895
别名	BYSL;BYSTIN;bystin

产品验证



Western blot analysis of BYSL expressed in Mouse testis,Rat testis,HeLa using BYSL Rabbit pAb at 1:1000. Secondary antibody: HRP Goat Anti-Rabbit IgG (H+L) at 1:5000. Lysates/proteins: 30ug per lane. Blocking buffer: 5% non-fat dry milk in TBST. Detection: ECL Enhanced Kit. Exposure time: 120s.

实验步骤

访问官网浏览详情: www.ablybio.cn