

# $\beta$ -Synuclein Rabbit pAb

货号: **AYP19870**

## 产品信息

反应	Mouse,Rat
宿主	Rabbit
克隆性	Polyclonal
预测反应	
应用	WB
推荐浓度	<b>WB:</b> 1:500 - 1:2000
理论分子量	14kDa
实测分子量	16kDa
形式	Liquid
保存条件	Store at -20°C. Avoid freeze / thaw cycles. Buffer: PBS with 0.02% sodium azide,50% glycerol,pH7.3.
偶联物	Unconjugated
阳性对照	Mouse eye,Mouse brain,Rat brain,Rat spinal cord
细胞定位	Cytoplasm
纯化	Affinity purification

## 抗原信息

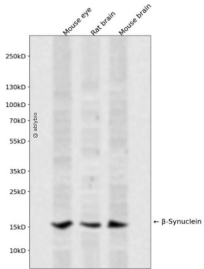
抗原信息	Recombinant fusion protein containing a sequence corresponding to amino acids 1-134 of human $\beta$ -Synuclein (NP_001001502.1).
序列	MDVFMKGLSMAKEGVVAAAETKQGVTEAAETKEGVLYVGSKTREGVVQGVASVAEKTKEQASHLGGAVFSGAGNIA AATGLVKREEFPTDLKPEEVAQEAAEEPLIEPLMEPEGESYEDPPQEEYQEYEPEA

## 靶点信息

研究背景	This gene encodes a member of a small family of proteins that inhibit phospholipase D2 and may function in neuronal plasticity. The encoded protein is abundant in lesions of patients with Alzheimer disease. A mutation in this gene was found in individuals with dementia with Lewy bodies. Alternative splicing results in multiple transcript variants.
基因ID	6620

基因名	SNCB
Swiss	Q16143
别名	SNCB

## 产品验证



Western blot analysis of  $\beta$ -Synuclein expressed in Mouse eye,Rat brain,Mouse brain using  $\beta$ -Synuclein Rabbit pAb at 1:1000. Secondary antibody: HRP Goat Anti-Rabbit IgG (H+L) at 1:5000. Lysates/proteins: 30ug per lane. Blocking buffer: 5% non-fat dry milk in TBST. Detection: ECL Enhanced Kit. Exposure time: 120s.

## 实验步骤

访问官网浏览详情: [www.ablybio.cn](http://www.ablybio.cn)