

SEMA4F Rabbit pAb

货号: **AYP19867**

产品信息

反应	Human,Mouse,Rat
宿主	Rabbit
克隆性	Polyclonal
预测反应	
应用	WB IHC
推荐浓度	WB: 1:500 - 1:2000 IHC: 1:50 - 1:200
理论分子量	66kDa/83kDa
实测分子量	83kDa
形式	Liquid
保存条件	Store at -20°C. Avoid freeze / thaw cycles. Buffer: PBS with 0.02% sodium azide,50% glycerol,pH7.3.
偶联物	Unconjugated
阳性对照	SH-SY5Y,HepG2,A-549,Mouse brain,Mouse liver,Mouse lung,Rat brain,Rat liver
细胞定位	Membrane,Single-pass type I membrane protein
纯化	Affinity purification

抗原信息

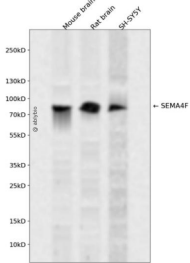
抗原信息	Recombinant fusion protein containing a sequence corresponding to amino acids 280-420 of human SEMA4F (NP_004254.2).
序列	RKTLQQRWTTFLKADLLCPGPEHGRASSVLQDVAVLRPELGAGTPIFYGIFSSQWEGATISAVCAFRPQDIRTVLNGPFRELKHCNRLPVDNDVPQPRPGECITNNMKLRHFGSSLSLPDRVLTFFIRDHPLMDRPVFP

靶点信息

研究背景	This gene encodes a transmembrane class IV semaphorin family protein, which plays a role in neural development. This gene may be involved in neurogenesis in prostate cancer, the development of neurofibromas, and breast cancer tumorigenesis. Alternative splicing results in multiple transcript variants.
基因ID	10505

基因名	SEMA4F
Swiss	O95754
别名	SEMA4F;M-SEMA;PRO2353;S4F;SEMAM;SEMAW;m-Sema-M

产品验证



Western blot analysis of SEMA4F expressed in Mouse brain,Rat brain,SH-SY5Y using SEMA4F Rabbit pAb at 1:1000. Secondary antibody: HRP Goat Anti-Rabbit IgG (H+L) at 1:5000. Lysates/proteins: 30ug per lane. Blocking buffer: 5% non-fat dry milk in TBST. Detection: ECL Enhanced Kit. Exposure time: 120s.

实验步骤

访问官网浏览详情: www.ablybio.cn