

PLB1 Rabbit pAb

货号: **AYP19865**

产品信息

| | |
|-------|--|
| 反应 | Human,Mouse,Rat |
| 宿主 | Rabbit |
| 克隆性 | Polyclonal |
| 预测反应 | |
| 应用 | WB |
| 推荐浓度 | WB: 1:500 - 1:2000 |
| 理论分子量 | 47kDa/54kDa/85kDa/161kDa/163kDa |
| 实测分子量 | 170kDa |
| 形式 | Liquid |
| 保存条件 | Store at -20°C. Avoid freeze / thaw cycles. Buffer: PBS with 0.02% sodium azide,50% glycerol,pH7.3. |
| 偶联物 | Unconjugated |
| 阳性对照 | A-431,U-87MG,HL-60,HT-29,Mouse testis,Mouse lung,Mouse skeletal muscle,Rat testis |
| 细胞定位 | Apical cell membrane,Single-pass type I membrane protein |
| 纯化 | Affinity purification |

抗原信息

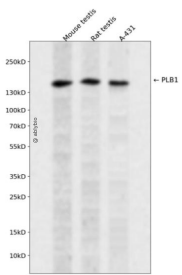
| | |
|------|--|
| 抗原信息 | Recombinant fusion protein containing a sequence corresponding to amino acids 1110-1415 of human PLB1 (NP_694566.4). |
| 序列 | ARPNSSDLPTSWRGLSWSIGGDGNLEHTTLPNLIKFNYPYLLGFSTSTWEGTAGLNVAEGARARDMPAQAWDLVER MKNSPDINLEKDWKLVTLFIGVNDLCHYCENPEAHLATEYVQHIQQALDILSEELPRAFVNVVEVMELASLYQGQGGKCAM LAAQNNCTCLRHSQSSLEKQELKKNWNLQHGISSFSYWHQYTQREDFAVVVQPFQNTLTPLNERNRGTDLTFFSEDCF HFSDRGHAEMAIALWNNMLEPVGRKTTNNFTHSRAKCLKPSPESPLYTLRNSRLLPDQAEAEPEV |

靶点信息

| | |
|------|---|
| 研究背景 | This gene encodes a membrane-associated phospholipase that displays lysophospholipase and phospholipase A2 activities through removal of sn-1 and sn-2 fatty acids of glycerophospholipids. In addition, it displays lipase and retinyl ester hydrolase activities. The encoded protein is highly conserved and is composed of a large, glycosylated extracellular domain composed of four tandem homologous domains, followed by a hydrophobic segment that anchors the enzyme to the membrane and a short C-terminal cytoplasmic tail. This gene has been identified as a candidate rheumatoid arthritis risk gene. |
|------|---|

| | |
|-------|-----------------------|
| 基因ID | 151056 |
| 基因名 | PLB1 |
| Swiss | Q6P1J6 |
| 别名 | PLB1;PLB;PLB/LIP;hPLB |

产品验证



Western blot analysis of PLB1 expressed in Mouse testis,Rat testis,A-431 using PLB1 Rabbit pAb at 1:10 00. Secondary antibody: HRP Goat Anti-Rabbit IgG (H+L) at 1:5000. Lysates/proteins: 30ug per lane. Bl ocking buffer: 5% non-fat dry milk in TBST. Detection: ECL Enhanced Kit. Exposure time: 120s.

实验步骤

访问官网浏览详情: www.ablybio.cn