

EMB Rabbit pAb

货号: **AYP19861**

产品信息

反应	Human
宿主	Rabbit
克隆性	Polyclonal
预测反应	
应用	WB
推荐浓度	WB: 1:500 - 1:2000
理论分子量	31kDa/36kDa
实测分子量	37kDa
形式	Liquid
保存条件	Store at -20°C. Avoid freeze / thaw cycles. Buffer: PBS with 0.02% sodium azide,50% glycerol,pH7.3.
偶联物	Unconjugated
阳性对照	Jurkat,MCF7,THP-1
细胞定位	Cell junction,Cell membrane,Single-pass type I membrane protein,synapse
纯化	Affinity purification

抗原信息

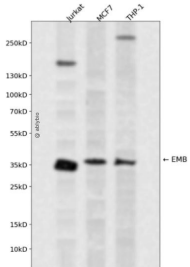
抗原信息	Recombinant fusion protein containing a sequence corresponding to amino acids 33-260 of human EMB (NP_940851.1).
序列	DGSAPDSPFTSPPLREEIMANNFSLESHNISLTHESSMPVEKNITLERPSNVNLTQCFTTSGDLNAVNVTWKKGDEQLENN YLVSATGSTLYTQYRFTIINSKQMGSYSCFFREEKEQRGTFNFKVPELHGKNKPLISYVGDSTVLTCKCQNCFPLNWTWYS SNGSVKVPVGVQMKNKYVINGTYANETKTKITQLEEDGESYWCRALFQLGESEEHIELVVLSYLVP

靶点信息

研究背景	This gene encodes a transmembrane glycoprotein that is a member of the immunoglobulin superfamily. The encoded protein may be involved in cell growth and development by mediating interactions between the cell and extracellular matrix. A pseudogene of this gene is found on chromosome 1.
基因ID	133418

基因名	EMB
Swiss	Q6PCB8
别名	EMB;GP70;embigin

产品验证



Western blot analysis of EMB expressed in Jurkat,MCF7,THP-1 using EMB Rabbit pAb at 1:1000. Secondary antibody: HRP Goat Anti-Rabbit IgG (H+L) at 1:5000. Lysates/proteins: 30ug per lane. Blocking buffer: 5% non-fat dry milk in TBST. Detection: ECL Enhanced Kit. Exposure time: 120s.

实验步骤

访问官网浏览详情: www.ablybio.cn