

# PIBF1 Rabbit pAb

货号: **AYP19850**

## 产品信息

反应	Human
宿主	Rabbit
克隆性	Polyclonal
预测反应	
应用	WB
推荐浓度	<b>WB:</b> 1:500 - 1:2000
理论分子量	12kDa/25kDa/35kDa/89kDa
实测分子量	110kDa
形式	Liquid
保存条件	Store at -20°C. Avoid freeze / thaw cycles. Buffer: PBS with 0.01% thiomersal,50% glycerol,pH7.3.
偶联物	Unconjugated
阳性对照	SKOV3,LO2
细胞定位	Cytoplasm,Nucleus,Secreted,Secreted,centriolar satellite,centrosome,cytoskeleton,microtubule organizing center
纯化	Affinity purification

## 抗原信息

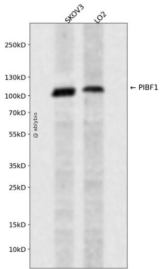
抗原信息	Recombinant fusion protein containing a sequence corresponding to amino acids 598-757 of human PIBF 1 (NP_006337.2).
序列	LEHRKDQVTQLSQELDRANSLNQTQQPYRYLIESVRQRDSKIDSLTESIAQLEKDVSNLNKEKSALLQTKNQMALDLEQLLNHREELAAMKQILVKMHSKHSENSLLLTKEPKHV TENQKSKTLNVPKEHEDNIFTPKPTLFTKKEAPEWSKKQKMKT

## 靶点信息

研究背景	
基因ID	10464
基因名	PIBF1

Swiss	Q8WXW3
别名	PIBF1;C13orf24;CEP90;PIBF

## 产品验证



Western blot analysis of PIBF1 expressed in SKOV3,LO2 using PIBF1 Rabbit pAb at 1:1000. Secondary anti body: HRP Goat Anti-Rabbit IgG (H+L) at 1:5000. Lysates/proteins: 30ug per lane. Blocking buffer: 5% no n-fat dry milk in TBST. Detection: ECL Enhanced Kit. Exposure time: 120s.

## 实验步骤

访问官网浏览详情: [www.ablybio.cn](http://www.ablybio.cn)