

XPOT Rabbit pAb

货号: **AYP19849**

产品信息

反应	Human,Mouse,Rat
宿主	Rabbit
克隆性	Polyclonal
预测反应	
应用	WB
推荐浓度	WB: 1:500 - 1:2000
理论分子量	109kDa
实测分子量	100kDa
形式	Liquid
保存条件	Store at -20°C. Avoid freeze / thaw cycles. Buffer: PBS with 0.01% thiomersal,50% glycerol,pH7.3.
偶联物	Unconjugated
阳性对照	B cells,Mouse brain,Mouse kidney,Mouse liver,Rat kidney
细胞定位	Cytoplasm,Nucleus
纯化	Affinity purification

抗原信息

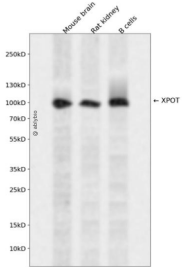
抗原信息	Recombinant fusion protein containing a sequence corresponding to amino acids 1-200 of human XPOT (NP_009166.2).
序列	MDEQALLGLNPNADSDFRQRALAYFEQLKISPDWQVCAEALAQRYSDDHVKFFCFQVLEHQVKYKSELTTVQQQLIRETLISWLQAQMLNPQPEKTFIRNKAQV FALLFVTEYLTKWPKFFFDILSVVDLNPBGVDLYLRILMAIDSELVDRDVTHTSE EARRNTLIKDTMREQCIPNLVESWYQILQNYQFTNSE

靶点信息

研究背景	This gene encodes a protein belonging to the RAN-GTPase exportin family that mediates export of tRNA from the nucleus to the cytoplasm. Translocation of tRNA to the cytoplasm occurs once exportin has bound both tRNA and GTP-bound RAN.
基因ID	11260

基因名	XPOT
Swiss	O43592
别名	XPOT;XPO3

产品验证



Western blot analysis of XPOT expressed in Mouse brain,Rat kidney,B cells using XPOT Rabbit pAb at 1:1000. Secondary antibody: HRP Goat Anti-Rabbit IgG (H+L) at 1:5000. Lysates/proteins: 30ug per lane. Blocking buffer: 5% non-fat dry milk in TBST. Detection: ECL Enhanced Kit. Exposure time: 120s.

实验步骤

访问官网浏览详情: www.ablybio.cn