

# SYNPO Rabbit pAb

货号: **AYP19846**

## 产品信息

反应	Human,Mouse,Rat
宿主	Rabbit
克隆性	Polyclonal
预测反应	
应用	WB
推荐浓度	<b>WB:</b> 1:500 - 1:2000
理论分子量	73kDa/96kDa/99kDa
实测分子量	115kDa
形式	Liquid
保存条件	Store at -20°C. Avoid freeze / thaw cycles. Buffer: PBS with 0.01% thiomersal,50% glycerol,pH7.3.
偶联物	Unconjugated
阳性对照	HeLa,Rat brain
细胞定位	Cell junction,Cell projection,Cytoplasm,Perikaryon,cytoskeleton,dendritic spine,postsynaptic cell membrane,postsynaptic density,synapse,tight junction
纯化	Affinity purification

## 抗原信息

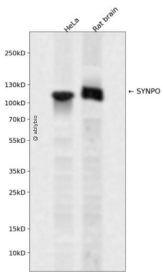
抗原信息	A synthetic peptide corresponding to a sequence within amino acids 800 to the C-terminus of human SYNPO (NP_001159680.1).
序列	RPEPTKPPYQLRPSLFLVLSPIKEPAKVSPRAASPAKPSSLDLVPNLPGALPPSPALPRPSRSSPGLYTPGQDSLQPTAVSPPYGGDISPVSPRAWSPRAKQAPRPSFSTRNAGIEAQVWKPSFCFK

## 靶点信息

研究背景	Synaptopodin is an actin-associated protein that may play a role in actin-based cell shape and motility. The name synaptopodin derives from the protein's associations with postsynaptic densities and dendritic spines and with renal podocytes (Mundel et al., 1997 [PubMed 9314539]).[supplied by OMIM, Mar 2008]
基因ID	11346

基因名	SYNPO
Swiss	Q8N3V7
别名	SYNPO

## 产品验证



Western blot analysis of SYNPO expressed in HeLa,Rat brain using SYNPO Rabbit pAb at 1:1000. Secondary antibody: HRP Goat Anti-Rabbit IgG (H+L) at 1:5000. Lysates/proteins: 30ug per lane. Blocking buffer: 5 % non-fat dry milk in TBST. Detection: ECL Enhanced Kit. Exposure time: 120s.

## 实验步骤

访问官网浏览详情: [www.ablybio.cn](http://www.ablybio.cn)