

MEF2A Rabbit pAb

货号: **AYP19842**

产品信息

反应	Human,Mouse,Rat
宿主	Rabbit
克隆性	Polyclonal
预测反应	
应用	WB IHC IF/ICC
推荐浓度	WB: 1:100 - 1:500 IHC: 1:50 - 1:200 IF/ICC: 1:50 - 1:200
理论分子量	45kDa/46kDa/53kDa/54kDa
实测分子量	55KDa
形式	Liquid
保存条件	Store at -20°C. Avoid freeze / thaw cycles. Buffer: PBS with 0.05% proclin300,50% glycerol,pH7.3.
偶联物	Unconjugated
阳性对照	HeLa,Raji,MCF7,Mouse spleen,C6
细胞定位	Nucleus
纯化	Affinity purification

抗原信息

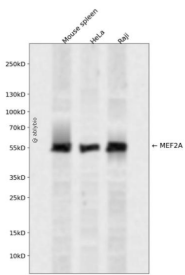
抗原信息	A synthetic peptide corresponding to a sequence within amino acids 1-100 of human MEF2A (NP_001124400.1).
序列	MGRKKIQITRIMDERNRQTLRKKGLNGCESPDADDYFEHSPLSEDRFSKLNEDSDFIFKRGPPGLPPQNFMSVTPVTSP NALSYTNPSSLVSPSLAA

靶点信息

研究背景	The protein encoded by this gene is a DNA-binding transcription factor that activates many muscle-specific, growth factor-induced, and stress-induced genes. The encoded protein can act as a homodimer or as a heterodimer and is involved in several cellular processes, including muscle development, neuronal differentiation, cell growth control, and apoptosis. Defects in this gene could be a cause of autosomal dominant coronary artery disease 1 with myocardial infarction (ADCAD1). Several transcript variants encoding different isoforms have been found for this gene.
------	--

基因ID	4205
基因名	MEF2A
Swiss	Q02078
别名	MEF2A;ADCAD1;RSRFC4;RSRFC9;mef2

产品验证



Western blot analysis of MEF2A expressed in Mouse spleen, HeLa, Raji using MEF2A Rabbit pAb at 1:1000. Secondary antibody: HRP Goat Anti-Rabbit IgG (H+L) at 1:5000. Lysates/proteins: 30ug per lane. Blocking buffer: 5% non-fat dry milk in TBST. Detection: ECL Enhanced Kit. Exposure time: 120s.

实验步骤

访问官网浏览详情: www.ablybio.cn