

# GIGYF2 Rabbit pAb

货号: **AYP19840**

## 产品信息

反应	Human,Mouse,Rat
宿主	Rabbit
克隆性	Polyclonal
预测反应	
应用	WB IHC
推荐浓度	<b>WB:</b> 1:500 - 1:1000 <b>IHC:</b> 1:50 - 1:100
理论分子量	148kDa/149kDa/150kDa/152kDa
实测分子量	150-170KDa
形式	Liquid
保存条件	Store at -20°C. Avoid freeze / thaw cycles. Buffer: PBS with 0.01% thiomersal,50% glycerol,pH7.3.
偶联物	Unconjugated
阳性对照	HeLa,Jurkat,Mouse kidney,Rat brain
细胞定位	cytoplasmic stress granule,cytosol,endoplasmic reticulum,endosome,Golgi apparatus,perikaryon,proximal dendrite
纯化	Affinity purification

## 抗原信息

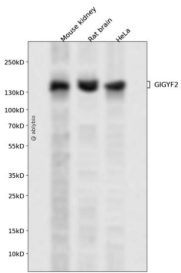
抗原信息	Recombinant fusion protein containing a sequence corresponding to amino acids 350-500 of human GIGYF2 (NP_001096617.1).
序列	VDEGEECSDSEGSNNEEAKEPDKTNKKEGEKTDVRGVASEETPQTSSSSARPGTPSDHQSQEASQFERKDEPKTEQTEK AEEETRMENSLPAKVPSRGDEMADVQQLSQIPSDTASPLLILPPPVPNPSPTLRPVETPVVGAPGMGSVS

## 靶点信息

研究背景	This gene contains CAG trinucleotide repeats and encodes a protein containing several stretches of polyglutamine residues. The encoded protein may be involved in the regulation of tyrosine kinase receptor signaling. This gene is located in a chromosomal region that was genetically linked to Parkinson disease type 11, and mutations in this gene were thought to be causative for this disease. However, more recent studies in different populations have been unable to replicate this association. Alternative splicing results in multiple transcript variants.
------	--

基因ID	26058
基因名	GIGYF2
Swiss	Q6Y7W6
别名	GIGYF2;GYF2;PARK11;PERQ2;PERQ3;TNRC15

## 产品验证



Western blot analysis of GIGYF2 expressed in Mouse kidney,Rat brain,HeLa using GIGYF2 Rabbit pAb at 1:1000. Secondary antibody: HRP Goat Anti-Rabbit IgG (H+L) at 1:5000. Lysates/proteins: 30ug per lane. Blocking buffer: 5% non-fat dry milk in TBST. Detection: ECL Enhanced Kit. Exposure time: 120s.

## 实验步骤

访问官网浏览详情: [www.ablybio.cn](http://www.ablybio.cn)