

CPQ Rabbit pAb

货号: **AYP19839**

产品信息

反应	Human,Mouse,Rat
宿主	Rabbit
克隆性	Polyclonal
预测反应	
应用	WB
推荐浓度	WB: 1:500 - 1:2000
理论分子量	51kDa
实测分子量	57-60kDa
形式	Liquid
保存条件	Store at -20°C. Avoid freeze / thaw cycles. Buffer: PBS with 0.01% thiomersal,50% glycerol,pH7.3.
偶联物	Unconjugated
阳性对照	293T,LO2,Mouse kidney,Rat kidney
细胞定位	Endoplasmic reticulum,Golgi apparatus,Lysosome,Secreted
纯化	Affinity purification

抗原信息

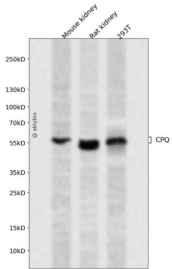
抗原信息	A synthetic peptide corresponding to a sequence within amino acids 1-100 of human CPQ (NP_057218.1).
序列	MKFLIAFFGGVHLLSLCSGKAICKNGISKRTFEEIKEEIASCGDVAKAIINLAVYGKAQNRSYERLALLVDTVGPRLSGSKNL EKAIQIMYQNLQDGL

靶点信息

研究背景	This gene encodes a metallopeptidase that belongs to the peptidase M28 family. The encoded protein may catalyze the cleavage of dipeptides with unsubstituted terminals into amino acids.
基因ID	10404
基因名	CPQ

Swiss	Q9Y646
别名	CPQ;LDP;PGCP

产品验证



Western blot analysis of CPQ expressed in Mouse kidney,Rat kidney,293T using CPQ Rabbit pAb at 1:1000. Secondary antibody: HRP Goat Anti-Rabbit IgG (H+L) at 1:5000. Lysates/proteins: 30ug per lane. Blocking buffer: 5% non-fat dry milk in TBST. Detection: ECL Enhanced Kit. Exposure time: 120s.

实验步骤

访问官网浏览详情: www.ablybio.cn