

SEL1L Rabbit pAb

货号: **AYP19837**

产品信息

反应	Human,Mouse,Rat
宿主	Rabbit
克隆性	Polyclonal
预测反应	
应用	WB IF/ICC
推荐浓度	WB: 1:500 - 1:2000 IF/ICC: 1:50 - 1:200
理论分子量	33kDa/88kDa
实测分子量	102kDa
形式	Liquid
保存条件	Store at -20°C. Avoid freeze / thaw cycles. Buffer: PBS with 0.01% thiomersal,50% glycerol,pH7.3.
偶联物	Unconjugated
阳性对照	BxPC-3,HepG2,293T,Mouse kidney,Rat liver
细胞定位	Endoplasmic reticulum membrane,Single-pass type I membrane protein
纯化	Affinity purification

抗原信息

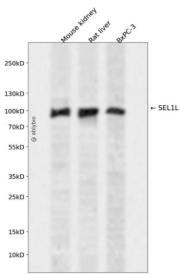
抗原信息	Recombinant fusion protein containing a sequence corresponding to amino acids 22-190 of human SEL1L (NP_005056.3).
序列	SSDEEGSQDESLSKTTLTSDSEVKDHTTAGRVVAGQIFLDSESELESSIQEEEDSLKSQEGESVTEDISFLESPNPENKDYEEPKKVRKPALTAIEGTAHGEPCHFPLFLDKYDECTSDGREDEGRLWCATTYDYKADEKWGFCETEEEEAAKRRQMQE AEMMYQTG

靶点信息

研究背景	The protein encoded by this gene is part of a protein complex required for the retrotranslocation or dislocation of misfolded proteins from the endoplasmic reticulum lumen to the cytosol, where they are degraded by the proteasome in a ubiquitin-dependent manner. Alternatively spliced transcript variants encoding different isoforms have been found for this gene.
------	---

基因ID	6400
基因名	SEL1L
Swiss	Q9UBV2
别名	SEL1L;PRO1063;SEL1-LIKE;SEL1L1

产品验证



Western blot analysis of SEL1L expressed in Mouse kidney,Rat liver,BxPC-3 using SEL1L Rabbit pAb at 1:1000. Secondary antibody: HRP Goat Anti-Rabbit IgG (H+L) at 1:5000. Lysates/proteins: 30ug per lane. Blocking buffer: 5% non-fat dry milk in TBST. Detection: ECL Enhanced Kit. Exposure time: 120s.

实验步骤

访问官网浏览详情: www.ablybio.cn