

SPON2 Rabbit pAb

货号: **AYP19836**

产品信息

反应	Human,Mouse,Rat
宿主	Rabbit
克隆性	Polyclonal
预测反应	
应用	WB IHC
推荐浓度	WB: 1:500 - 1:1000 IHC: 1:50 - 1:200
理论分子量	35kDa
实测分子量	36KDa
形式	Liquid
保存条件	Store at -20°C. Avoid freeze / thaw cycles. Buffer: PBS with 0.01% thiomersal,50% glycerol,pH7.3.
偶联物	Unconjugated
阳性对照	HCT116,HeLa,Rat brain
细胞定位	Secreted,extracellular matrix,extracellular space
纯化	Affinity purification

抗原信息

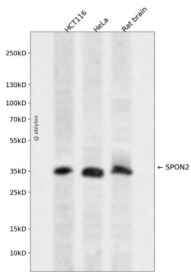
抗原信息	Recombinant fusion protein containing a sequence corresponding to amino acids 27-150 of human SPON 2 (NP_036577.1).
序列	QPLGGESICSARAPAKYSITFTGKWSQTAFPKQYPLFRPPAQWSSLLGAAHSSDYSMWRKNQYVSNGLRDFEAERGEAW ALMKEIEAAGEALQSVHAVFSAPAVPSGTGQTSAELEVQRRHSLVS

靶点信息

研究背景	Cell adhesion protein that promotes adhesion and outgrowth of hippocampal embryonic neurons. Binds directly to bacteria and their components and functions as an opsonin for macrophage phagocytosis of bacteria. Essential in the initiation of the innate immune response and represents a unique pattern-recognition molecule in the ECM for microbial pathogens (By similarity. Binds bacterial lipopolysaccharide (LPS).
基因ID	10417

基因名	SPON2
Swiss	Q9BUD6
别名	SPON2;DIL-1;DIL1;M-SPONDIN;MINDIN;spodin-2

产品验证



Western blot analysis of SPON2 expressed in HCT116, HeLa, Rat brain using SPON2 Rabbit pAb at 1:1000. Secondary antibody: HRP Goat Anti-Rabbit IgG (H+L) at 1:5000. Lysates/proteins: 30ug per lane. Blocking buffer: 5% non-fat dry milk in TBST. Detection: ECL Enhanced Kit. Exposure time: 120s.

实验步骤

访问官网浏览详情: www.ablybio.cn