

# MRPS18B Rabbit pAb

货号: **AYP19833**

## 产品信息

反应	Human,Mouse,Rat
宿主	Rabbit
克隆性	Polyclonal
预测反应	
应用	WB IHC
推荐浓度	<b>WB:</b> 1:500 - 1:2000 <b>IHC:</b> 1:100 - 1:200
理论分子量	29kDa
实测分子量	35kDa
形式	Liquid
保存条件	Store at -20°C. Avoid freeze / thaw cycles. Buffer: PBS with 0.01% thiomersal,50% glycerol,pH7.3.
偶联物	Unconjugated
阳性对照	U-87MG,A-431,Mouse kidney,Mouse brain,Rat heart,Rat kidney
细胞定位	Mitochondrion
纯化	Affinity purification

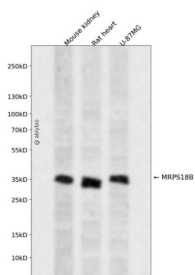
## 抗原信息

抗原信息	Recombinant fusion protein containing a sequence corresponding to amino acids 1-258 of human MRPS18B (NP_054765.1).
序列	MAASVLNTVLRRLPMLSLFRGSHRVQVPLQLCTKAPSEEDSLSSVPISPYKDEPWKYLESEEEYQERYGSRPVWADYRRN HKGGVPPQTRKTCIRRNKVVGNPCICRDHKLHVDFRNVKLEQFVCAHTGIIFYAPYTGVCVKQHKRLTQAIQKARDHG LLIYHIPQVEPRDLDFSTSHGAVSATPPAPTLVSGDPWYPWYNWKQPPERELSRLRRLYQGHLQEESGPPPEMPPR TPAEASSTGQTGPQSAL

## 靶点信息

研究背景	Mammalian mitochondrial ribosomal proteins are encoded by nuclear genes and help in protein synthesis within the mitochondrion. Mitochondrial ribosomes (mitoribosomes) consist of a small 28S subunit and a large 39S subunit. They have an estimated 75% protein to rRNA composition compared to prokaryotic ribosomes, where this ratio is reversed. Another difference between mammalian mitoribosomes and prokaryotic ribosomes is that the latter contain a 5S rRNA. Among different species, the proteins comprising the mitoribosome differ greatly in sequence, and sometimes in biochemical properties, which prevents easy recognition by sequence homology. This gene encodes a 28S subunit protein that belongs to the ribosomal protein S18P family. The encoded protein is one of three that has significant sequence similarity to bacterial S18 proteins. The primary sequences of the three human mitochondrial S18 proteins are no more closely related to each other than they are to the prokaryotic S18 proteins. Pseudogenes corresponding to this gene are found on chromosomes 1q and 2q.
基因ID	28973
基因名	MRPS18B
Swiss	Q9Y676
别名	MRPS18B;C6orf14;HSPC183;HumanS18a;MRP-S18-2;MRPS18-2;PTD017;S18amt

## 产品验证



Western blot analysis of MRPS18B expressed in Mouse kidney,Rat heart,U-87MG using MRPS18B Rabbit pAb at 1:1000. Secondary antibody: HRP Goat Anti-Rabbit IgG (H+L) at 1:5000. Lysates/proteins: 30ug per lane. Blocking buffer: 5% non-fat dry milk in TBST. Detection: ECL Enhanced Kit. Exposure time: 120s.

## 实验步骤

访问官网浏览详情: [www.ablybio.cn](http://www.ablybio.cn)