

— ABLYBIO, Help Your Research



PAI-1/Serpin E1 Rabbit pAb

货号: **AYP19829**

产品信息

| | |
|-------|--|
| 反应 | Human,Mouse,Rat |
| 宿主 | Rabbit |
| 克隆性 | Polyclonal |
| 预测反应 | |
| 应用 | WB IF/ICC |
| 推荐浓度 | WB: 1:500 - 1:2000 IF/ICC: 1:50 - 1:100 |
| 理论分子量 | 43kDa/45kDa |
| 实测分子量 | 45kDa |
| 形式 | Liquid |
| 保存条件 | Store at -20°C. Avoid freeze / thaw cycles. Buffer: PBS with 0.01% thiomersal,50% glycerol,pH7.3. |
| 偶联物 | Unconjugated |
| 阳性对照 | HT-1080,SH-SY5Y,Mouse liver,Rat liver |
| 细胞定位 | Secreted |
| 纯化 | Affinity purification |

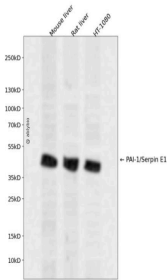
抗原信息

| | |
|------|--|
| 抗原信息 | Recombinant fusion protein containing a sequence corresponding to amino acids 24-158 of human PAI-1/Serpin E1 (NP_000593.1). |
|------|--|

靶点信息

| | |
|-------|---|
| 研究背景 | This gene encodes a member of the serine proteinase inhibitor (serpin) superfamily. This member is the principal inhibitor of tissue plasminogen activator (tPA) and urokinase (uPA), and hence is an inhibitor of fibrinolysis. Defects in this gene are the cause of plasminogen activator inhibitor-1 deficiency (PAI-1 deficiency), and high concentrations of the gene product are associated with thrombophilia. Alternatively spliced transcript variants encoding different isoforms have been found for this gene. |
| 基因ID | 5054 |
| 基因名 | SERPINE1 |
| Swiss | P05121 (https://www.uniprot.org/uniprotkb/P05121/entry) |
| 别名 | PAI,PAI-1,PAI1,PLANH1,SERPINE1,PAI-1/Serpin E1 Rabbit pAb,Endothelial plasminogen activator inhibitor,Serpin E1 |

产品验证



Western blot analysis of PAI-1/Serpin E1 expressed in Mouse liver, Rat liver, HT-1080 using PAI-1/Serpin E1 Rabbit pAb at 1:1000. Secondary antibody: HRP Goat Anti-Rabbit IgG (H+L) at 1:5000. Lysates/proteins: 30ug per lane. Blocking buffer: 5% non-fat dry milk in TBST. Detection: ECL Enhanced Kit. Exposure time: 120s.

实验步骤

访问官网浏览详情: www.ablybio.cn (<https://www.ablybio.cn/www.ablybio.cn>)