

# NET1 Rabbit pAb

货号: **AYP19819**

## 产品信息

反应	Human,Mouse,Rat
宿主	Rabbit
克隆性	Polyclonal
预测反应	
应用	WB IF/ICC
推荐浓度	<b>WB:</b> 1:500 - 1:2000 <b>IF/ICC:</b> 1:50 - 1:200
理论分子量	61kDa/67kDa
实测分子量	60kDa
形式	Liquid
保存条件	Store at -20°C. Avoid freeze / thaw cycles. Buffer: PBS with 0.02% sodium azide,50% glycerol,pH7.3.
偶联物	Unconjugated
阳性对照	HeLa,SW480,MCF7,Mouse thymus,Mouse liver
细胞定位	Cytoplasm,Nucleus
纯化	Affinity purification

## 抗原信息

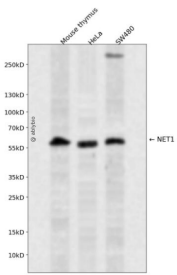
抗原信息	Recombinant fusion protein containing a sequence corresponding to amino acids 1-300 of human NET1 ( NP_001040625.1).
序列	MEPELAAQKQPRPRRRSRASGLSTEGATGPSADTSGSELDGRCSLRGSSFTFLTPGPNWDFTLKRKRREKDDDDVVSLSLSDLKEPSNKRVRPLARVTSLANLISVPRNGAVRRFGQTIQSFTLRGDHRSPASAQKFSSRSTVPTPAKRRSSALWSEMLDITMKESLTTREIRRQEAIYEMSRGEQDLIEDLKLARKAYHDPMLKLSIMSEEELTHIFGDLDSYIPLHEDLLTRIGEATKPDGTVEQIGHILVSWLPRLNAYRGYCSNQLAAKALLDQKKQDPRVQDFLQRCLESPFSR

## 靶点信息

研究背景	This gene is part of the family of Rho guanine nucleotide exchange factors. Members of this family activate Rho proteins by catalyzing the exchange of GDP for GTP. The protein encoded by this gene interacts with RhoA within the cell nucleus and may play a role in repairing DNA damage after ionizing radiation. Pseudogenes of this gene are located on the long arms of chromosomes 1, 7 and 18. Alternative splicing results in multiple transcript variants that encode different protein isoforms.
------	---

基因ID	10276
基因名	NET1
Swiss	Q7Z628
别名	NET1;ARHGEF8;NET1A

### 产品验证



Western blot analysis of NET1 expressed in Mouse thymus, HeLa, SW480 using NET1 Rabbit pAb at 1:1000. Secondary antibody: HRP Goat Anti-Rabbit IgG (H+L) at 1:5000. Lysates/proteins: 30ug per lane. Blocking buffer: 5% non-fat dry milk in TBST. Detection: ECL Enhanced Kit. Exposure time: 120s.

### 实验步骤

访问官网浏览详情: [www.ablybio.cn](http://www.ablybio.cn)