

# SLC25A24 Rabbit pAb

货号: **AYP19818**

## 产品信息

反应	Human,Mouse,Rat
宿主	Rabbit
克隆性	Polyclonal
预测反应	
应用	WB IF/ICC
推荐浓度	<b>WB:</b> 1:500 - 1:2000 <b>IF/ICC:</b> 1:50 - 1:200
理论分子量	51kDa/53kDa
实测分子量	50kDa
形式	Liquid
保存条件	Store at -20°C. Avoid freeze / thaw cycles. Buffer: PBS with 0.01% thiomersal,50% glycerol,pH7.3.
偶联物	Unconjugated
阳性对照	BxPC-3,U-87MG,HT-29,293T,NIH/3T3,Mouse spleen,Rat spleen
细胞定位	Mitochondrion inner membrane,Multi-pass membrane protein
纯化	Affinity purification

## 抗原信息

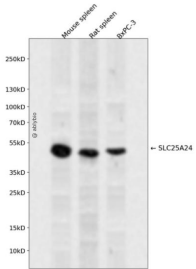
抗原信息	Recombinant fusion protein containing a sequence corresponding to amino acids 1-200 of human SLC25A24 (NP_037518.3).
序列	MLRWLRDFVLPTAACQDAEQPTRYETLQALDRNGDGVVDIGELQEGLRNLGIPLGQDAEEKIFTTGDVKNKDGKLDFFEEFMKYLKDHEKKMKLAFKSLDKNNDGKIEASEIVQSLQTLGLTISEQQAELILQSIDVDGTMTVDWNEWRDYFLNPNVTDIEEIIIRFWKHSTGIDIGDSLTPDEFTEDEKKSGQWWRQLLA

## 靶点信息

研究背景	This gene encodes a carrier protein that transports ATP-Mg exchanging it for phosphate. Multiple transcript variants encoding different isoforms have been found for this gene.
基因ID	29957

基因名	SLC25A24
Swiss	Q6NUK1
别名	SLC25A24;APC1;SCAMC-1

## 产品验证



Western blot analysis of SLC25A24 expressed in Mouse spleen, Rat spleen, BxPC-3 using SLC25A24 Rabbit pAb at 1:1000. Secondary antibody: HRP Goat Anti-Rabbit IgG (H+L) at 1:5000. Lysates/proteins: 30ug per lane. Blocking buffer: 5% non-fat dry milk in TBST. Detection: ECL Enhanced Kit. Exposure time: 120s.

## 实验步骤

访问官网浏览详情: [www.ablybio.cn](http://www.ablybio.cn)