

# CYP26B1 Rabbit pAb

货号: **AYP19816**

## 产品信息

反应	Human,Mouse
宿主	Rabbit
克隆性	Polyclonal
预测反应	
应用	WB
推荐浓度	<b>WB:</b> 1:500 - 1:2000
理论分子量	49kDa/55kDa/57kDa
实测分子量	58-65kDa
形式	Liquid
保存条件	Store at -20°C. Avoid freeze / thaw cycles. Buffer: PBS with 0.01% thiomersal,50% glycerol,pH7.3.
偶联物	Unconjugated
阳性对照	MCF7,Mouse lung
细胞定位	Endoplasmic reticulum membrane,Microsome membrane,Peripheral membrane protein
纯化	Affinity purification

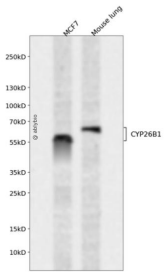
## 抗原信息

抗原信息	Recombinant fusion protein containing a sequence corresponding to amino acids 213-512 of human CYP26B1 (NP_063938.1).
序列	VYQQFVDNVFSLPVDLPFSGYRRGIQARQILQKGLEKAIREKLQCTQGKDYLDALDLLIESKEHGKEMTMQELKDGTTLELI FAAYATTASASTSLIMQLLKHPTVLEKLRDELRAHGILHSGGPCCEGTLRLDTLSGLRYLDCVIKEVMRLFTPISSGGYRTVLQ TFELDGFQIPKGWSVMYSIRDTHDTAPVFKDQVNFDPDRFSQARSEDKGRFHLYLPFGGGVVRTCLGKHLAKLFLKVLAVE LASTSRFELATRTFPRITLVPVLHPVDGLSVKFFGLDSNQNEILPETEAMLSATV

## 靶点信息

研究背景	This gene encodes a member of the cytochrome P450 superfamily. The cytochrome P450 proteins are monooxygenases which catalyze many reactions involved in drug metabolism and synthesis of cholesterol, steroids and other lipids. The encoded protein is localized to the endoplasmic reticulum, and functions as a critical regulator of all-trans retinoic acid levels by the specific inactivation of all-trans retinoic acid to hydroxylated forms. Mutations in this gene are associated with radiohumeral fusions and other skeletal and craniofacial anomalies, and increased levels of the encoded protein are associated with atherosclerotic lesions. Alternative splicing results in multiple transcript variants.
基因ID	56603
基因名	CYP26B1
Swiss	Q9NR63
别名	CYP26B1;CYP26A2;P450RAI-2;P450RAI2;RHFCA

## 产品验证



Western blot analysis of CYP26B1 expressed in MCF7, Mouse lung using CYP26B1 Rabbit pAb at 1:1000. Secondary antibody: HRP Goat Anti-Rabbit IgG (H+L) at 1:5000. Lysates/proteins: 30ug per lane. Blocking buffer: 5% non-fat dry milk in TBST. Detection: ECL Enhanced Kit. Exposure time: 120s.

## 实验步骤

访问官网浏览详情: [www.ablybio.cn](http://www.ablybio.cn)