

WSB1 Rabbit pAb

货号: **AYP19798**

产品信息

反应	Human
宿主	Rabbit
克隆性	Polyclonal
预测反应	
应用	WB
推荐浓度	WB: 1:500 - 1:2000
理论分子量	24kDa/27kDa/30kDa/47kDa
实测分子量	47kDa
形式	Liquid
保存条件	Store at -20°C. Avoid freeze / thaw cycles. Buffer: PBS with 0.01% thiomersal, 50% glycerol, pH7.3.
偶联物	Unconjugated
阳性对照	HT-29, A-549, HeLa, HepG2, SGC-7901
细胞定位	cytosol
纯化	Affinity purification

抗原信息

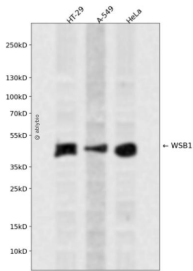
抗原信息	Recombinant fusion protein containing a sequence corresponding to amino acids 182-421 of human WSB 1 (NP_056441.6).
序列	GSLILVSASRDKTLRVWDLKDDGNMMKVLRGHQNWVYSCAFSPDSSMLCSVGASKAVFLWNMDKYTMIRKLEGHHHDVVACDFSPDGALLATASYDTRVYIWDPHNGDILMEFGHLFPPTPIFAGGANDRWVRSVSFSDGLHVASLADDKMVRFWRIDEDYPVQVAPLSNGLCCAFSTDGSLAAGTHDGSVYFWATPRQVPSLQLCRMSIRRVMPQTQEVQELPIPSKLLLEFLSYRI

靶点信息

研究背景	This gene encodes a member of the WD-protein subfamily. This protein shares a high sequence identity to mouse and chick proteins. It contains several WD-repeats spanning most of the protein and an SOCS box in the C-terminus. Alternatively spliced transcript variants encoding distinct isoforms have been found for this gene.
------	--

基因ID	26118
基因名	WSB1
Swiss	Q9Y6I7
别名	WSB1;SWIP1;WSB-1

产品验证



Western blot analysis of WSB1 expressed in HT-29, A-549, HeLa using WSB1 Rabbit pAb at 1:1000. Secondary antibody: HRP Goat Anti-Rabbit IgG (H+L) at 1:5000. Lysates/proteins: 30ug per lane. Blocking buffer: 5% non-fat dry milk in TBST. Detection: ECL Enhanced Kit. Exposure time: 120s.

实验步骤

访问官网浏览详情: www.ablybio.cn