

SHARPIN Rabbit pAb

货号: AYP19776

产品信息

反应	Human,Mouse,Rat
宿主	Rabbit
克隆性	Polyclonal
预测反应	
应用	WB IF/ICC
推荐浓度	WB: 1:500 - 1:1000 IF/ICC: 1:50 - 1:100
理论分子量	33kDa/39kDa
实测分子量	43KDa
形式	Liquid
保存条件	Store at -20°C. Avoid freeze / thaw cycles. Buffer: PBS with 0.05% proclin300,50% glycerol,pH7.3.
偶联物	Unconjugated
阳性对照	PC-3,T-47D,NIH/3T3,Rat testis,Rat thymus
细胞定位	Cell junction,Cytoplasm,cytosol,synapse
纯化	Affinity purification

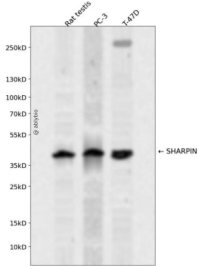
抗原信息

抗原信息	Recombinant fusion protein containing a sequence corresponding to amino acids 1-170 of human SHARPIN (NP_112236.3).
序列	MAPPAGGAAAAASDLGSAAVLLAVHA AVRPLGAGPD AEAQLRRLQLSADPERPGRFRLELLGAGPGAVNLEWPLESVSYT IRGPTQHELQPPPGGPGTLSLHFLNPQEAQRWAVLVRGATVEGQNGSKSNSPPALGPEACPVS LPSPEASTLKGPPPEA DLPRSPGNLT

靶点信息

研究背景	Component of the LUBAC complex which conjugates linear polyubiquitin chains in a head-to-tail manner to substrates and plays a key role in NF-kappa-B activation and regulation of inflammation. LUBAC conjugates linear polyubiquitin to IKBKG and RIPK1 and is involved in activation of the canonical NF-kappa-B and the JNK signaling pathways. Linear ubiquitination mediated by the LUBAC complex interferes with TNF-induced cell death and thereby prevents inflammation. LUBAC is recruited to the TNF-R1 signaling complex (TNF-RSC) following polyubiquitination of TNF-RSC components by BIRC2 and/or BIRC3 and to conjugate linear polyubiquitin to IKBKG and possibly other components contributing to the stability of the complex. Together with OTULIN, the LUBAC complex regulates the canonical Wnt signaling during angiogenesis.
基因ID	81858
基因名	SHARPIN
Swiss	Q9H0F6
别名	SHARPIN;SIPL1;sharpin

产品验证



Western blot analysis of SHARPIN expressed in Rat testis, PC-3, T-47D using SHARPIN Rabbit pAb at 1:1000. Secondary antibody: HRP Goat Anti-Rabbit IgG (H+L) at 1:5000. Lysates/proteins: 30ug per lane. Blocking buffer: 5% non-fat dry milk in TBST. Detection: ECL Enhanced Kit. Exposure time: 120s.

实验步骤

访问官网浏览详情: www.ablybio.cn