

# GIPC2 Rabbit pAb

货号: **AYP19770**

## 产品信息

|       |  |
|-------|--|
| 反应    | Human,Mouse  |
| 宿主    | Rabbit   |
| 克隆性   | Polyclonal   |
| 预测反应  |  |
| 应用    | WB   |
| 推荐浓度  | <b>WB:</b> 1:500 - 1:2000  |
| 理论分子量 | 34kDa  |
| 实测分子量 | 34kDa  |
| 形式    | Liquid   |
| 保存条件  | Store at -20°C. Avoid freeze / thaw cycles.<br>Buffer: PBS with 0.02% sodium azide,50% glycerol,pH7.3. |
| 偶联物   | Unconjugated   |
| 阳性对照  | U-251MG  |
| 细胞定位  | Cytoplasm  |
| 纯化    | Affinity purification  |

## 抗原信息

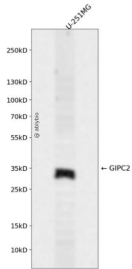
|      |   |
|------|---|
| 抗原信息 | Recombinant fusion protein containing a sequence corresponding to amino acids 1-315 of human GIPC2 ( NP_060125.4).  |
| 序列   | MPLKLRGKKKAKSKETAGLVEGEPTGAGGGSLASRAPARRLVFHAQLAHGSATGRVEGFSSIQELYAQIAGAFEISPSEIL<br>YCTLNTPKIDMERLLGGQLGLEDFIFAHVKGIEKEVNVYKSEDSLGLTITDNGVGYAFIKRIKDGGVIDSVKTICVGDHIESIN<br>GENIVGWRHYDVAKKLKELKKEELFTMKLIEPKKAFEIELRSKAGKSSGEKIGCGRATLRLRSKGPATVEEMPSETKAKAIEKI<br>DDVLELYMGIRDIDLATTMFEAGKDKVNPDEFAVALDELGDFAFPDEFVFDVWVGIGDAKRRGL |

## 靶点信息

|      |   |
|------|---|
| 研究背景 | Enables identical protein binding activity. Located in extracellular exosome. |
| 基因ID | 54810   |
| 基因名  | GIPC2   |

|       |                        |
|-------|------------------------|
| Swiss | Q8TF65                 |
| 别名    | GIPC2;SEMCAP-2;SEMCAP2 |

## 产品验证



Western blot analysis of GIPC2 expressed in U-251MG using GIPC2 Rabbit pAb at 1:1000. Secondary antibody: HRP Goat Anti-Rabbit IgG (H+L) at 1:5000. Lysates/proteins: 30ug per lane. Blocking buffer: 5% non-fat dry milk in TBST. Detection: ECL Enhanced Kit. Exposure time: 120s.

## 实验步骤

访问官网浏览详情: [www.ablybio.cn](http://www.ablybio.cn)