

SLC12A7 Rabbit pAb

货号: **AYP19759**

产品信息

反应	Human,Mouse,Rat
宿主	Rabbit
克隆性	Polyclonal
预测反应	
应用	WB
推荐浓度	WB: 1:500 - 1:2000
理论分子量	28kDa/119kDa
实测分子量	119kDa
形式	Liquid
保存条件	Store at -20°C. Avoid freeze / thaw cycles. Buffer: PBS with 0.01% thiomersal,50% glycerol,pH7.3.
偶联物	Unconjugated
阳性对照	Mouse kidney,Mouse liver,Rat kidney
细胞定位	Cell membrane,Multi-pass membrane protein
纯化	Affinity purification

抗原信息

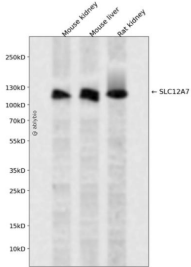
抗原信息	Recombinant fusion protein containing a sequence corresponding to amino acids 1-70 of human SLC12A7 (NP_006589.2).
序列	MPTNFTVVPVEAHADGGGDETAERTEAPGTPEGPEPERPSPGDGNPRENSPFLNNVEVEQESFFEGKNMA

靶点信息

研究背景	Mediates electroneutral potassium-chloride cotransport when activated by cell swelling. May mediate K(+) uptake into Deiters' cells in the cochlea and contribute to K(+) recycling in the inner ear. Important for the survival of cochlear outer and inner hair cells and the maintenance of the organ of Corti. May be required for basolateral Cl(-) extrusion in the kidney and contribute to renal acidification (By similarity).
基因ID	10723

基因名	SLC12A7
Swiss	Q9Y666
别名	SLC12A7;KCC4

产品验证



Western blot analysis of SLC12A7 expressed in Mouse kidney, Mouse liver, Rat kidney using SLC12A7 Rabbit pAb at 1:1000. Secondary antibody: HRP Goat Anti-Rabbit IgG (H+L) at 1:5000. Lysates/proteins: 30ug per lane. Blocking buffer: 5% non-fat dry milk in TBST. Detection: ECL Enhanced Kit. Exposure time: 120s.

实验步骤

访问官网浏览详情: www.ablybio.cn