

# PGE receptor EP1 (PTGER1) Rabbit pAb

货号: **AYP19758**

## 产品信息

反应	Mouse
宿主	Rabbit
克隆性	Polyclonal
预测反应	
应用	WB
推荐浓度	<b>WB:</b> 1:500 - 1:2000
理论分子量	41kDa
实测分子量	42kDa
形式	Liquid
保存条件	Store at -20°C. Avoid freeze / thaw cycles. Buffer: PBS with 0.01% thiomersal, 50% glycerol, pH7.3.
偶联物	Unconjugated
阳性对照	Mouse pancreas
细胞定位	Cell membrane, Multi-pass membrane protein
纯化	Affinity purification

## 抗原信息

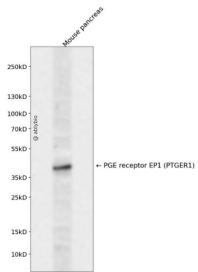
抗原信息	A synthetic peptide corresponding to a sequence within amino acids 300-400 of human PGE receptor EP1 (PGE receptor EP1 (PTGER1)) (NP_000946.2).
序列	VGIMVVSCICWSPMLVLVALAVGGWSSTSLQRPLFLAVRLASWNQILDPWVYILLRQAVLRQLLRLLPPRAGAKGGPAGLG LTPSAWEASSLRSSRHSGLS

## 靶点信息

研究背景	The protein encoded by this gene is a member of the G protein-coupled receptor family. This protein is one of four receptors identified for prostaglandin E2 (PGE2). Through a phosphatidylinositol-calcium second messenger system, G-Q proteins mediate this receptor's activity. Knockout studies in mice suggested a role of this receptor in mediating algisia and in regulation of blood pressure. Studies in mice also suggested that this gene may mediate adrenocorticotrophic hormone response to bacterial endotoxin.
基因ID	5731

基因名	PTGER1
Swiss	P34995
别名	PTGER1;EP1

## 产品验证



Western blot analysis of PGE receptor EP1 (PTGER1) expressed in Mouse pancreas using PGE receptor EP1 (PTGER1) Rabbit pAb at 1:1000. Secondary antibody: HRP Goat Anti-Rabbit IgG (H+L) at 1:5000. Lysates/proteins: 30ug per lane. Blocking buffer: 5% non-fat dry milk in TBST. Detection: ECL Enhanced Kit. Exposure time: 120s.

## 实验步骤

访问官网浏览详情: [www.ablybio.cn](http://www.ablybio.cn)