

# SBF1 Rabbit pAb

货号: **AYP19748**

## 产品信息

反应	Human,Rat
宿主	Rabbit
克隆性	Polyclonal
预测反应	
应用	WB
推荐浓度	<b>WB:</b> 1:500 - 1:2000
理论分子量	208kDa/211kDa
实测分子量	208kDa
形式	Liquid
保存条件	Store at -20°C. Avoid freeze / thaw cycles. Buffer: PBS with 0.01% thiomersal,50% glycerol,pH7.3.
偶联物	Unconjugated
阳性对照	Raji,Jurkat,Rat brain
细胞定位	Nucleus
纯化	Affinity purification

## 抗原信息

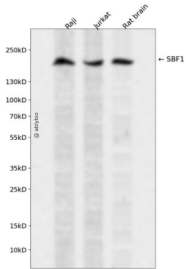
抗原信息	Recombinant fusion protein containing a sequence corresponding to amino acids 1630-1770 of human SBF1 (NP_002963.2).
序列	PPYDWELAQGPPEPPEEERSDGGAPQSRRRVWPCYDSCPRAQPDAISRLLLEELQRLETGQPAERWKDTWDRVKAAQRLEGRPDGRGTPSSLLVSTAPHHRRSLGVYLQEGPVGSTLSLSLDSDQSSGTTSGSRQAAR

## 靶点信息

研究背景	This gene encodes a member of the protein-tyrosine phosphatase family. However, the encoded protein does not appear to be a catalytically active phosphatase because it lacks several amino acids in the catalytic pocket. This protein contains a Guanine nucleotide exchange factor (GEF) domain which is necessary for its role in growth and differentiation. Mutations in this gene have been associated with Charcot-Marie-Tooth disease 4B3. Pseudogenes of this gene have been defined on chromosomes 1 and 8.
基因ID	6305

基因名	SBF1
Swiss	O95248
别名	SBF1;CMT4B3;DENND7A;MTMR5

## 产品验证



Western blot analysis of SBF1 expressed in Raji, Jurkat, Rat brain using SBF1 Rabbit pAb at 1:1000. Secondary antibody: HRP Goat Anti-Rabbit IgG (H+L) at 1:5000. Lysates/proteins: 30ug per lane. Blocking buffer: 5% non-fat dry milk in TBST. Detection: ECL Enhanced Kit. Exposure time: 120s.

## 实验步骤

访问官网浏览详情: [www.ablybio.cn](http://www.ablybio.cn)