

# SULT1A3 Rabbit pAb

货号: **AYP19745**

## 产品信息

反应	Human,Mouse,Rat
宿主	Rabbit
克隆性	Polyclonal
预测反应	
应用	WB IHC IF/ICC
推荐浓度	<b>WB:</b> 1:500 - 1:2000 <b>IHC:</b> 1:50 - 1:100 <b>IF/ICC:</b> 1:50 - 1:100
理论分子量	34kDa
实测分子量	34kDa
形式	Liquid
保存条件	Store at -20°C. Avoid freeze / thaw cycles. Buffer: PBS with 0.01% thiomersal,50% glycerol,pH7.3.
偶联物	Unconjugated
阳性对照	A-549,LO2,293T,HT-29,Mouse kidney,Mouse liver,Rat liver
细胞定位	cytoplasm,cytosol
纯化	Affinity purification

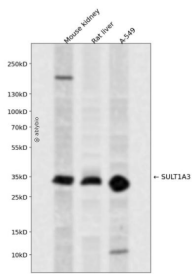
## 抗原信息

抗原信息	Recombinant fusion protein containing a sequence corresponding to amino acids 1-100 of human SULT1A3 (NP_808220.1).
序列	MELIQDTSRPPLEYVKGVPLIKYFAEALGPLQSFQARPDLLINTYPKSGTTWVSQILDMIYQGGDLEKCNRAPIYVRVPFLEVNDPGEPSGLETCLKDTP

## 靶点信息

研究背景	Sulfotransferase enzymes catalyze the sulfate conjugation of many hormones, neurotransmitters, drugs, and xenobiotic compounds. These cytosolic enzymes are different in their tissue distributions and substrate specificities. The gene structure (number and length of exons) is similar among family members. This gene encodes a phenol sulfotransferase with thermolabile enzyme activity. Four sulfotransferase genes are located on the p arm of chromosome 16; this gene and SULT1A4 arose from a segmental duplication. This gene is the most centromeric of the four sulfotransferase genes. Read-through transcription exists between this gene and the upstream SLX1A (SLX1 structure-specific endonuclease subunit homolog A) gene that encodes a protein containing GIY-YIG domains.
基因ID	6818
基因名	
Swiss	PODMM9
别名	SULT1A3;HAST;HAST3;M-PST;ST1A3;ST1A3/ST1A4;ST1A5;STM;TL-PST

## 产品验证



Western blot analysis of SULT1A3 expressed in Mouse kidney, Rat liver, A-549 using SULT1A3 Rabbit pAb at 1:1000. Secondary antibody: HRP Goat Anti-Rabbit IgG (H+L) at 1:5000. Lysates/proteins: 30ug per lane. Blocking buffer: 5% non-fat dry milk in TBST. Detection: ECL Enhanced Kit. Exposure time: 120s.

## 实验步骤

访问官网浏览详情: [www.ablybio.cn](http://www.ablybio.cn)