

# PALLD Rabbit pAb

货号: **AYP19743**

## 产品信息

反应	Human,Mouse,Rat
宿主	Rabbit
克隆性	Polyclonal
预测反应	
应用	WB IP IHC IF/ICC
推荐浓度	<b>WB:</b> 1:500 - 1:1000 <b>IP:</b> 1:500 - 1:1000 <b>IHC:</b> 1:50 - 1:200 <b>IF/ICC:</b> 1:50 - 1:200
理论分子量	42kDa/58kDa/73kDa/85-150kDa
实测分子量	150kDa
形式	Liquid
保存条件	Store at -20°C. Avoid freeze / thaw cycles. Buffer: PBS with 0.01% thiomersal,50% glycerol,pH7.3.
偶联物	Unconjugated
阳性对照	HeLa,A-549
细胞定位	Cell junction,Cell projection,Cytoplasm,Z line,cytoskeleton,focal adhesion,lamellipodium,myofibril,ruffle,s arcomere
纯化	Affinity purification

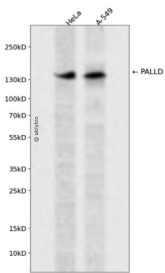
## 抗原信息

抗原信息	Recombinant fusion protein containing a sequence corresponding to amino acids 383-672 of human PALL D (NP_001159582.1).
序列	AVNQRGRSPRSPSGHPHVRPRRSRSDSGDENEPQERFFRPHFLQAPGDLTVQEGKLCRMDCKVSGLPDLSWQLD GKPVRPDSAHKMLVRENGVHSLIIEPVTSRDAGIYTCIATNRAGQNSFSLELVVAAKEAHKPPVFIEKLQNTGVADGYPVRL ECRVLGVPPPQIFWKKENESLTHSTDRVSMHQDNHGYICLLIQGATKEDAGWYTVSAKNEAGIVSCTARLDVYTQWHQQ SQSTKPKKVRPSASRYAALSDQGLDIKAAFQPEANPSHLTLNTALVEEDL

## 靶点信息

研究背景	This gene encodes a cytoskeletal protein that is required for organizing the actin cytoskeleton. The protein is a component of actin-containing microfilaments, and it is involved in the control of cell shape, adhesion, and contraction. Polymorphisms in this gene are associated with a susceptibility to pancreatic cancer type 1, and also with a risk for myocardial infarction. Alternative splicing results in multiple transcript variants.
基因ID	23022
基因名	PALLD
Swiss	Q8WX93
别名	PALLD;CGI-151;CGI151;MYN;PNCA1;SIH002;palladin

## 产品验证



Western blot analysis of PALLD expressed in HeLa, A-549 using PALLD Rabbit pAb at 1:1000. Secondary antibody: HRP Goat Anti-Rabbit IgG (H+L) at 1:5000. Lysates/proteins: 30ug per lane. Blocking buffer: 5% non-fat dry milk in TBST. Detection: ECL Enhanced Kit. Exposure time: 120s.

## 实验步骤

访问官网浏览详情: [www.ablybio.cn](http://www.ablybio.cn)