

# GEMIN6 Rabbit pAb

货号: **AYP19738**

## 产品信息

反应	Human
宿主	Rabbit
克隆性	Polyclonal
预测反应	
应用	WB
推荐浓度	<b>WB:</b> 1:500 - 1:2000
理论分子量	18kDa
实测分子量	19kDa
形式	Liquid
保存条件	Store at -20°C. Avoid freeze / thaw cycles. Buffer: PBS with 0.01% thiomersal,50% glycerol,pH7.3.
偶联物	Unconjugated
阳性对照	HT-29,HeLa,293T
细胞定位	Cytoplasm,Nucleus,gem,nucleoplasm
纯化	Affinity purification

## 抗原信息

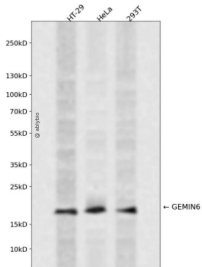
抗原信息	Recombinant fusion protein containing a sequence corresponding to amino acids 1-167 of human GEMIN6 (NP_079051.9).
序列	MSEWMKKGPLEWQDYIYKEVRVTASEKNEYKGWVLTTPV SANIVLVNFLEDGSM SVTGIMGHAVQTVETMNEGDHRV REKLMHLFTSGDCKAYSPEDLEERKNSLKKWLEKNHIPITEQGDAPRTL CVAGVLTIDPPYGPENCSSSNEIILSRVQDLIEG HLTASQ

## 靶点信息

研究背景	GEMIN6 is part of a large macromolecular complex, localized to both the cytoplasm and the nucleus, that plays a role in the cytoplasmic assembly of small nuclear ribonucleoproteins (snRNPs). Other members of this complex include SMN (MIM 600354), GEMIN2 (SIP1; MIM 602595), GEMIN3 (DDX20; MIM 606168), GEMIN4 (MIM 606969), and GEMIN5 (MIM 607005).[supplied by OMIM, Jul 2002]
基因ID	79833

基因名	GEMIN6
Swiss	Q8WXD5
别名	GEMIN6

## 产品验证



Western blot analysis of GEMIN6 expressed in HT-29, HeLa, 293T using GEMIN6 Rabbit pAb at 1:1000. Secondary antibody: HRP Goat Anti-Rabbit IgG (H+L) at 1:5000. Lysates/proteins: 30ug per lane. Blocking buffer: 5% non-fat dry milk in TBST. Detection: ECL Enhanced Kit. Exposure time: 120s.

## 实验步骤

访问官网浏览详情: [www.ablybio.cn](http://www.ablybio.cn)