

CD3E Antigen Rabbit pAb

货号: **AYP19723**

产品信息

反应	Human,Mouse,Rat
宿主	Rabbit
克隆性	Polyclonal
预测反应	
应用	WB IHC IF/ICC
推荐浓度	WB: 1:500 - 1:1000 IHC: 1:50 - 1:200 IF/ICC: 1:50 - 1:200
理论分子量	23kDa
实测分子量	23KDa
形式	Liquid
保存条件	Store at -20°C. Avoid freeze / thaw cycles. Buffer: PBS with 0.02% sodium azide,50% glycerol,pH7.3.
偶联物	Unconjugated
阳性对照	Jurkat,Rat thymus
细胞定位	Cell membrane,Single-pass type I membrane protein
纯化	Affinity purification

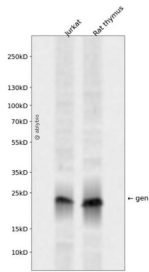
抗原信息

抗原信息	A synthetic peptide corresponding to a sequence within amino acids 100 to the C-terminus of human CD3 E Antigen (NP_000724.1).
序列	PRGSKPEDANFYLYLRARVCENCMEMDVMSVATIVIVDICITGLLLLLVYYWSKNRKAKAKPVTRGAGAGGRQRGQNKER PPPVNPDYEPIRKGQRDLYSGLNQRRI

靶点信息

研究背景	The protein encoded by this gene is the CD3-epsilon polypeptide, which together with CD3-gamma, -delta and -zeta, and the T-cell receptor alpha/beta and gamma/delta heterodimers, forms the T-cell receptor-CD3 complex. This complex plays an important role in coupling antigen recognition to several intracellular signal-transduction pathways. The genes encoding the epsilon, gamma and delta polypeptides are located in the same cluster on chromosome 11. The epsilon polypeptide plays an essential role in T-cell development. Defects in this gene cause immunodeficiency. This gene has also been linked to a susceptibility to type 1 diabetes in women.
基因ID	916
基因名	CD3E
Swiss	P07766
别名	CD3E;IMD18;T3E;TCRE;CD3e molecule

产品验证



Western blot analysis of gen expressed in Jurkat, Rat thymus using CD3E Antigen Rabbit pAb at 1:1000. Secondary antibody: HRP Goat Anti-Rabbit IgG (H+L) at 1:5000. Lysates/proteins: 30ug per lane. Blocking buffer: 5% non-fat dry milk in TBST. Detection: ECL Enhanced Kit. Exposure time: 120s.

实验步骤

访问官网浏览详情: www.ablybio.cn