

GP2 Rabbit pAb

货号: **AYP19711**

产品信息

反应	Mouse,Rat
宿主	Rabbit
克隆性	Polyclonal
预测反应	
应用	WB
推荐浓度	WB: 1:500 - 1:2000
理论分子量	43kDa/59kDa
实测分子量	59kDa
形式	Liquid
保存条件	Store at -20°C. Avoid freeze / thaw cycles. Buffer: PBS with 0.02% sodium azide,50% glycerol,pH7.3.
偶联物	Unconjugated
阳性对照	Mouse kidney,Rat kidney
细胞定位	Cell membrane,GPI-anchor,Lipid-anchor,Secreted
纯化	Affinity purification

抗原信息

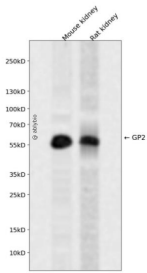
抗原信息	Recombinant fusion protein containing a sequence corresponding to amino acids 111-387 of human GP2 (NP_001007243.2).
序列	CSSILQTEERNWVSVTPVQASACRNILERNQTHAIYKNTLSLVNDFIIRDTILNINFQCAYPLDMKVSLSLQAALQPIVSSLNVS VDGNGEFIVRMALFQDQNYTNPYEGDAVELSVESVLYVGAILEQGDTSRFNLVLRNCYATPTEDKADLVKYFIIRNSCSNQ RDSTIHVEENGQSSESRFSVQMFAGHYDLVFLHCEIHLCDLNEQCQPSCSRVSEVPAIDLARVLDLGPITRRGAQ SPGVMNGTPSTAGFLVAWPMVLLTVLLAWLF

靶点信息

研究背景	This gene encodes an integral membrane protein that is secreted from intracellular zymogen granules and associates with the plasma membrane via glycosylphosphatidylinositol (GPI) linkage. The encoded protein binds pathogens such as enterobacteria, thereby playing an important role in the innate immune response. The C-terminus of this protein is related to the C-terminus of the protein encoded by the neighborin g gene, uromodulin (UMOD). Alternative splicing results in multiple transcript variants.
------	--

基因ID	2813
基因名	GP2
Swiss	P55259
别名	GP2;ZAP75

产品验证



Western blot analysis of GP2 expressed in Mouse kidney,Rat kidney using GP2 Rabbit pAb at 1:1000. Secondary antibody: HRP Goat Anti-Rabbit IgG (H+L) at 1:5000. Lysates/proteins: 30ug per lane. Blocking buffer: 5% non-fat dry milk in TBST. Detection: ECL Enhanced Kit. Exposure time: 120s.

实验步骤

访问官网浏览详情: www.ablybio.cn