

IGSF3 Rabbit pAb

货号: **AYP19710**

产品信息

反应	Human
宿主	Rabbit
克隆性	Polyclonal
预测反应	
应用	WB
推荐浓度	WB: 1:500 - 1:2000
理论分子量	135kDa/137kDa
实测分子量	135kDa
形式	Liquid
保存条件	Store at -20°C. Avoid freeze / thaw cycles. Buffer: PBS with 0.02% sodium azide,50% glycerol,pH7.3.
偶联物	Unconjugated
阳性对照	293T,MCF7
细胞定位	Membrane,Single-pass type I membrane protein
纯化	Affinity purification

抗原信息

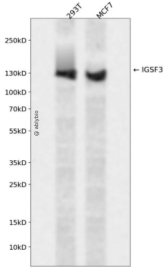
抗原信息	Recombinant fusion protein containing a sequence corresponding to amino acids 350-562 of human IGSF 3 (NP_001007238.1).
序列	KVAKESDSVFLKIYHLRQEDSGKYNCRVTEREKTVTGEFIDKESKRPKNIPIVLPLKSSISVEVASNASVILEGEDLRFSCSV RTAGR PQGRFSVIWQLVDRQNRNIMWLD RDGTVQPGSSYWERS SFGGVQMEQVQPN SFLGIFNSRKEDEGQYEC HVTEWVRAVDGEWQIVGERRASTPISITALEMGFAVTAISRTPGVTYSDSF

靶点信息

研究背景	The protein encoded by this gene is an immunoglobulin-like membrane protein containing several V-type Ig-like domains. A mutation in this gene has been associated with bilateral nasolacrimal duct obstruction (LCDD).
基因ID	3321

基因名	IGSF3
Swiss	O75054
别名	IGSF3;EWI-3;LCDD;V8

产品验证



Western blot analysis of IGSF3 expressed in 293T, MCF7 using IGSF3 Rabbit pAb at 1:1000. Secondary antibody: HRP Goat Anti-Rabbit IgG (H+L) at 1:5000. Lysates/proteins: 30ug per lane. Blocking buffer: 5% non-fat dry milk in TBST. Detection: ECL Enhanced Kit. Exposure time: 120s.

实验步骤

访问官网浏览详情: www.ablybio.cn