

REG3A Rabbit pAb

货号: **AYP19696**

产品信息

反应	Human,Mouse,Rat
宿主	Rabbit
克隆性	Polyclonal
预测反应	
应用	WB IHC
推荐浓度	WB: 1:500 - 1:2000 IHC: 1:50 - 1:200
理论分子量	19kDa
实测分子量	14-15kDa
形式	Liquid
保存条件	Store at -20°C. Avoid freeze / thaw cycles. Buffer: PBS with 0.02% sodium azide,50% glycerol,pH7.3.
偶联物	Unconjugated
阳性对照	HL-60,Mouse pancreas
细胞定位	Secreted
纯化	Affinity purification

抗原信息

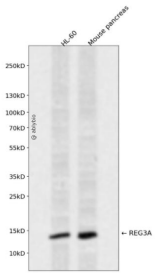
抗原信息	Recombinant fusion protein containing a sequence corresponding to amino acids 27-175 of human REG3A (NP_002571.1).
序列	EEPQRELP SARIRCPKGS KAYGSHCYALFLSPKSWTDADLACQKRPSGNLVS VLSGAEGSFVSSLVKSIGNSYVWIGLH DPTQGTEPNGEGWEWSSSDVMNYFAWERNPSTISSPGHCASLSRSTAF LRWKDYNCNVR LPPYVCKFTD

靶点信息

研究背景	This gene encodes a pancreatic secretory protein that may be involved in cell proliferation or differentiation. It has similarity to the C-type lectin superfamily. The enhanced expression of this gene is observed during pancreatic inflammation and liver carcinogenesis. The mature protein also functions as an antimicrobial protein with antibacterial activity. Alternate splicing results in multiple transcript variants that encode the same protein.
------	---

基因ID	5068
基因名	REG3A
Swiss	Q06141
别名	REG3A;HIP;HIP/PAP;INGAP;PAP;PAP-H;PAP1;PBCGF;REG-III;REG3

产品验证



Western blot analysis of REG3A expressed in HL-60, Mouse pancreas using REG3A Rabbit pAb at 1:1000. Secondary antibody: HRP Goat Anti-Rabbit IgG (H+L) at 1:5000. Lysates/proteins: 30ug per lane. Blocking buffer: 5% non-fat dry milk in TBST. Detection: ECL Enhanced Kit. Exposure time: 120s.

实验步骤

访问官网浏览详情: www.ablybio.cn