

RCN2 Rabbit pAb

货号: **AYP19688**

产品信息

反应	Human,Mouse
宿主	Rabbit
克隆性	Polyclonal
预测反应	
应用	WB
推荐浓度	WB: 1:500 - 1:2000
理论分子量	36kDa/39kDa
实测分子量	42kDa
形式	Liquid
保存条件	Store at -20°C. Avoid freeze / thaw cycles. Buffer: PBS with 0.02% sodium azide,50% glycerol,pH7.3.
偶联物	Unconjugated
阳性对照	HepG2,NCI-H460,Mouse brain,Mouse lung
细胞定位	Endoplasmic reticulum lumen
纯化	Affinity purification

抗原信息

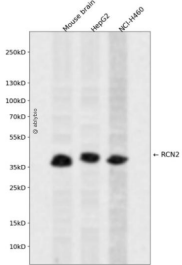
抗原信息	Recombinant fusion protein containing a sequence corresponding to amino acids 23-180 of human RCN2 (NP_002893.1).
序列	GKAEELHYPLGERRSDYDREALLGVQEDVDEYVKLGHEEQKRLQAIKKIDLDSDGFLTESELSSWIQMSFKHYAMQEA KQFVEYDKNSDDTWTWDEYNIQMYDRVIDFDENTALDDAEEESFRKLHLKDKKRFKANQDSGPGLSLEEFIAFEHP

靶点信息

研究背景	The protein encoded by this gene is a calcium-binding protein located in the lumen of the ER. The protein contains six conserved regions with similarity to a high affinity Ca(+2)-binding motif, the EF-hand. This gene maps to the same region as type 4 Bardet-Biedl syndrome, suggesting a possible causative role for this gene in the disorder. Alternatively spliced transcript variants encoding different isoforms have been found for this gene.
基因ID	5955

基因名	RCN2
Swiss	Q14257
别名	RCN2;E6BP;ERC-55;ERC55;TCBP49

产品验证



Western blot analysis of RCN2 expressed in Mouse brain, HepG2, NCI-H460 using RCN2 Rabbit pAb at 1:1000. Secondary antibody: HRP Goat Anti-Rabbit IgG (H+L) at 1:5000. Lysates/proteins: 30ug per lane. Blocking buffer: 5% non-fat dry milk in TBST. Detection: ECL Enhanced Kit. Exposure time: 120s.

实验步骤

访问官网浏览详情: www.ablybio.cn