

GBF1 Rabbit pAb

货号: **AYP19678**

产品信息

反应	Human,Mouse
宿主	Rabbit
克隆性	Polyclonal
预测反应	
应用	WB
推荐浓度	WB: 1:500 - 1:2000
理论分子量	206kDa
实测分子量	260kDa
形式	Liquid
保存条件	Store at -20°C. Avoid freeze / thaw cycles. Buffer: PBS with 0.02% sodium azide,50% glycerol,pH7.3.
偶联物	Unconjugated
阳性对照	HeLa
细胞定位	Cytoplasm,Endoplasmic reticulum-Golgi intermediate compartment,Golgi apparatus,Lipid droplet,Membrane,Peripheral membrane protein,cis-Golgi network,trans-Golgi network
纯化	Affinity purification

抗原信息

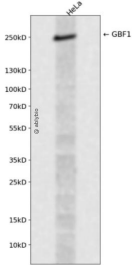
抗原信息	Recombinant fusion protein containing a sequence corresponding to amino acids 1-85 of human GBF1 (NP_004184.1).
序列	MVDKNIYIIQGEINIVVGAIKRNARWSTHTPLDEERDPLLHSFGHLKEVLNSITELSEIEPNVFLRPFLEVIKRSDDTTGPITGLA

靶点信息

研究背景	This gene encodes a member of the Sec7 domain family. The encoded protein is a guanine nucleotide exchange factor that regulates the recruitment of proteins to membranes by mediating GDP to GTP exchange. The encoded protein is localized to the Golgi apparatus and plays a role in vesicular trafficking by activating ADP ribosylation factor 1. The encoded protein has also been identified as an important host factor for viral replication. Multiple transcript variants have been observed for this gene.
基因ID	8729

基因名	GBF1
Swiss	Q92538
别名	GBF1;ARF1GEF

产品验证



Western blot analysis of GBF1 expressed in HeLa using GBF1 Rabbit pAb at 1:1000. Secondary antibody: HRP Goat Anti-Rabbit IgG (H+L) at 1:5000. Lysates/proteins: 30ug per lane. Blocking buffer: 5% non-fat dry milk in TBST. Detection: ECL Enhanced Kit. Exposure time: 120s.

实验步骤

访问官网浏览详情: www.ablybio.cn