

SLC30A1 Rabbit pAb

货号: **AYP19676**

产品信息

反应	Mouse,Rat
宿主	Rabbit
克隆性	Polyclonal
预测反应	
应用	WB
推荐浓度	WB: 1:500 - 1:2000
理论分子量	55kDa
实测分子量	55kDa
形式	Liquid
保存条件	Store at -20°C. Avoid freeze / thaw cycles. Buffer: PBS with 0.02% sodium azide,50% glycerol,pH7.3.
偶联物	Unconjugated
阳性对照	Mouse liver,Rat liver
细胞定位	Cell membrane,Multi-pass membrane protein
纯化	Affinity purification

抗原信息

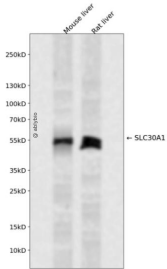
抗原信息	Recombinant fusion protein containing a sequence corresponding to amino acids 328-507 of human SLC30A1 (NP_067017.2).
序列	LLYTTYPLLKESALILLQTVPKQIDIRNLIKELRNVEGVVEVHELHVWQLAGSRIIATAHIKCEDPTSYMEVAKTIKDVFNHGHII ATTIQPEFASVGSKSSVVPCELACRTQCALKQCCGTLQAPSGKDAEKTPAVSISCLELSNNLEKKPRRTKAENIPAVVIEIKN MPNKQPSSL

靶点信息

研究背景	May be involved in zinc transport out of the cell.
基因ID	7779
基因名	SLC30A1

Swiss	Q9Y6M5
别名	SLC30A1;ZNT1;ZRC1

产品验证



Western blot analysis of SLC30A1 expressed in Mouse liver,Rat liver using SLC30A1 Rabbit pAb at 1:1000 . Secondary antibody: HRP Goat Anti-Rabbit IgG (H+L) at 1:5000. Lysates/proteins: 30ug per lane. Blocking buffer: 5% non-fat dry milk in TBST. Detection: ECL Enhanced Kit. Exposure time: 120s.

实验步骤

访问官网浏览详情: www.ablybio.cn