

SLC30A1 Rabbit pAb

货号: **AYP19675**

产品信息

反应	Human,Rat
宿主	Rabbit
克隆性	Polyclonal
预测反应	
应用	WB IHC
推荐浓度	WB: 1:500 - 1:2000 IHC: 1:50 - 1:200
理论分子量	55kDa
实测分子量	68kDa/70kDa
形式	Liquid
保存条件	Store at -20°C. Avoid freeze / thaw cycles. Buffer: PBS with 0.02% sodium azide,50% glycerol,pH7.3.
偶联物	Unconjugated
阳性对照	THP-1,Rat kidney
细胞定位	Cell membrane,Multi-pass membrane protein
纯化	Affinity purification

抗原信息

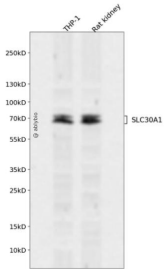
抗原信息	A synthetic peptide corresponding to a sequence within amino acids 250-350 of human SLC30A1 (NP_067017.2).
序列	LHVLGDALGSVIVVVNALVFYFSWKGCSEGFVNVPCFPDPCKAFVEIINSTHASVYEAGPCWVLYLDPTLCVVMVCILLYT TYPLLKESALILLQTPKQ

靶点信息

研究背景	May be involved in zinc transport out of the cell.
基因ID	7779
基因名	SLC30A1

Swiss	Q9Y6M5
别名	SLC30A1;ZNT1;ZRC1

产品验证



Western blot analysis of SLC30A1 expressed in THP-1, Rat kidney using SLC30A1 Rabbit pAb at 1:1000. Secondary antibody: HRP Goat Anti-Rabbit IgG (H+L) at 1:5000. Lysates/proteins: 30ug per lane. Blocking buffer: 5% non-fat dry milk in TBST. Detection: ECL Enhanced Kit. Exposure time: 120s.

实验步骤

访问官网浏览详情: www.ablybio.cn