

PMPCB Rabbit pAb

货号: **AYP19673**

产品信息

反应	Human,Mouse,Rat
宿主	Rabbit
克隆性	Polyclonal
预测反应	
应用	WB
推荐浓度	WB: 1:500 - 1:2000
理论分子量	54kDa
实测分子量	54kDa
形式	Liquid
保存条件	Store at -20°C. Avoid freeze / thaw cycles. Buffer: PBS with 0.02% sodium azide,50% glycerol,pH7.3.
偶联物	Unconjugated
阳性对照	LO2,HT-1080,Mouse kidney,Rat liver
细胞定位	Mitochondrion matrix
纯化	Affinity purification

抗原信息

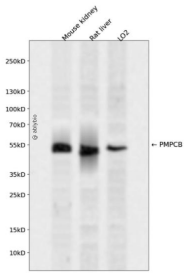
抗原信息	Recombinant fusion protein containing a sequence corresponding to amino acids 110-380 of human PMP CB (NP_004270.2).
序列	GTKKRSQLDLELEIENMGAHLNAYTSREQTVYYAKAFSKDLPRAVEILADIIQNSTLGEAEIERERGVILREMQEVEVTLQEVVFDYLNHATAYQNTALGRTILGPTENIKSISRKDLVDYITTHYKGPRIVLAAGGVSHDELDDLAKFHFGDSLCTHKGEIPALPPCKFTGSEIRVRDDKMPLAHLAIAVEAVGWHPDITCLMVANTLIGNWDRSFGGGMNLSKLAQLTCHGNLCHSFQSFNTSYTDTGLWGLYMVCESSTVADMLHV

靶点信息

研究背景	This gene is a member of the peptidase M16 family and encodes a protein with a zinc-binding motif. This protein is located in the mitochondrial matrix and catalyzes the cleavage of the leader peptides of precursor proteins newly imported into the mitochondria, though it only functions as part of a heterodimeric complex.
------	-----------------------------------------------------------------------------------------------------------------------------------------------------------------------------------------------------------------------------------------------------------------------------------------------------------------------------------

基因ID	9512
基因名	PMPCB
Swiss	O75439
别名	PMPCB;Beta-MPP;MPP11;MPPB;MPPP52;P-52

产品验证



Western blot analysis of PMPCB expressed in Mouse kidney,Rat liver,LO2 using PMPCB Rabbit pAb at 1:1000. Secondary antibody: HRP Goat Anti-Rabbit IgG (H+L) at 1:5000. Lysates/proteins: 30ug per lane. Blocking buffer: 5% non-fat dry milk in TBST. Detection: ECL Enhanced Kit. Exposure time: 120s.

实验步骤

访问官网浏览详情: www.ablybio.cn