

SLC25A13 Rabbit pAb

货号: **AYP19668**

产品信息

反应	Human,Mouse,Rat
宿主	Rabbit
克隆性	Polyclonal
预测反应	
应用	WB
推荐浓度	WB: 1:500 - 1:1000
理论分子量	74kDa
实测分子量	74KDa
形式	Liquid
保存条件	Store at -20°C. Avoid freeze / thaw cycles. Buffer: PBS with 0.02% sodium azide,50% glycerol,pH7.3.
偶联物	Unconjugated
阳性对照	HeLa,PC-12,HepG2,MCF7,Mouse liver,Mouse brain,Mouse kidney,Rat liver,Rat kidney
细胞定位	Mitochondrion inner membrane,Multi-pass membrane protein
纯化	Affinity purification

抗原信息

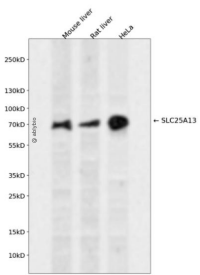
抗原信息	Recombinant fusion protein containing a sequence corresponding to amino acids 1-300 of human SLC25A13 (NP_001153682.1).
序列	MAAAKVALTKRADPAELRTIFLKYASIEKNGEFFMSPNDFVTRYLNIFGESQPNPKTVELLSGVVDQTKDGLISFQEFVAFES VLCAPDALFMVAFQLFDKAGKGEVTFEDVKQVFGQTTIHQHIPFNWDSEFVQLHFGKERKRHLTYAEFTQFLLEIQLEHAK QAFVQRDNARTGRVTAIDFRDIMVTIRPHVLTVPFVEECLVAAAGGTTSHQVSFSYFNGFNSSLNMMELIRKIYSTLAGTRKD VEVTKEEFVLAQAQKFGQVTPMEVDILFQLADLYEPRGRMTLADIERIAPLEEGT

靶点信息

研究背景	This gene is a member of the mitochondrial carrier family. The encoded protein contains four EF-hand Ca(2+) binding motifs in the N-terminal domain, and localizes to mitochondria. The protein catalyzes the exchange of aspartate for glutamate and a proton across the inner mitochondrial membrane, and is stimulated by calcium on the external side of the inner mitochondrial membrane. Mutations in this gene result in citrullinemia, type II. Multiple transcript variants encoding different isoforms have been found for this gene.
------	---

基因ID	10165
基因名	SLC25A13
Swiss	Q9UJS0
别名	SLC25A13;ARALAR2;CITRIN;CTLN2

产品验证



Western blot analysis of SLC25A13 expressed in Mouse liver, Rat liver, HeLa using SLC25A13 Rabbit pAb at 1:1000. Secondary antibody: HRP Goat Anti-Rabbit IgG (H+L) at 1:5000. Lysates/proteins: 30ug per lane. Blocking buffer: 5% non-fat dry milk in TBST. Detection: ECL Enhanced Kit. Exposure time: 120s.

实验步骤

访问官网浏览详情: www.ablybio.cn