

TOPBP1 Rabbit pAb

货号: **AYP19663**

产品信息

反应	Human,Mouse,Rat
宿主	Rabbit
克隆性	Polyclonal
预测反应	
应用	WB IHC
推荐浓度	WB: 1:500 - 1:2000 IHC: 1:50 - 1:200
理论分子量	170kDa
实测分子量	171kDa
形式	Liquid
保存条件	Store at -20°C. Avoid freeze / thaw cycles. Buffer: PBS with 0.02% sodium azide,50% glycerol,pH7.3.
偶联物	Unconjugated
阳性对照	Jurkat,K-562
细胞定位	Chromosome,Cytoplasm,Nucleus,centrosome,cytoskeleton,microtubule organizing center,spindle pole
纯化	Affinity purification

抗原信息

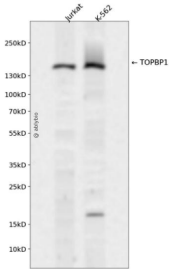
抗原信息	A synthetic peptide corresponding to a sequence within amino acids 1-100 of human TOPBP1 (NP_00895 8.2).
序列	MSRNDKEPFFVKFLKSSDNSKCFKALESIKEFQSEEYLQIITEEEALKIKENDRSLYICDPFSGVVFDHLKKGCRIVGPQVV IFCMHHQRCVPRAEHP

靶点信息

研究背景	This gene encodes a binding protein which interacts with the C-terminal region of topoisomerase II beta. This interaction suggests a supportive role for this protein in the catalytic reactions of topoisomerase II beta through transient breakages of DNA strands.
基因ID	11073

基因名	TOPBP1
Swiss	Q92547
别名	TOPBP1;TOP2BP1

产品验证



Western blot analysis of TOPBP1 expressed in Jurkat,K-562 using TOPBP1 Rabbit pAb at 1:1000. Secondary antibody: HRP Goat Anti-Rabbit IgG (H+L) at 1:5000. Lysates/proteins: 30ug per lane. Blocking buffer: 5% non-fat dry milk in TBST. Detection: ECL Enhanced Kit. Exposure time: 120s.

实验步骤

访问官网浏览详情: www.ablybio.cn