

ASAH2 Rabbit pAb

货号: **AYP19654**

产品信息

反应	Human,Mouse,Rat
宿主	Rabbit
克隆性	Polyclonal
预测反应	
应用	WB
推荐浓度	WB: 1:500 - 1:2000
理论分子量	81kDa/85kDa
实测分子量	85kDa
形式	Liquid
保存条件	Store at -20°C. Avoid freeze / thaw cycles. Buffer: PBS with 0.02% sodium azide,50% glycerol,pH7.3.
偶联物	Unconjugated
阳性对照	22Rv1,Mouse kidney,Rat kidney
细胞定位	Cell membrane,Single-pass type II membrane protein
纯化	Affinity purification

抗原信息

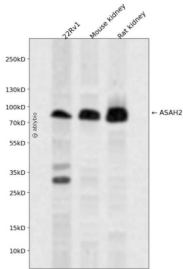
抗原信息	Recombinant fusion protein containing a sequence corresponding to amino acids 80-340 of human ASAH2 (NP_001137446.1).
序列	TATQTSPVPLTPESPLFQNFSGYHIGVGRADCTGQVADINLMGYGKSGQNAQGILTRLYSRAFIMAEPDGSNRTVFVSDIGMVSQRLRLEVLNRLQSKYGLYRRDNVILSGTHTHSGPAGYFYQYTVFVIASEGFSNQTFQHMTGILKSIDIAHTNMKPGKIFINKGNVDGVQINRSPYSYLQNPQSERARYSSNTDKEMIVLKMVDLNGDDLGLISWFAIHPVSMNNSNHLVNSDNVGYASYLLEQEKNKGYLPGQGP

靶点信息

研究背景	
基因ID	56624
基因名	ASAH2

Swiss	Q9NR71
别名	ASAH2;BCDase;HNAC1;LCDase;N-CDase;NCDase

产品验证



Western blot analysis of ASA2 expressed in 22Rv1, Mouse kidney, Rat kidney using ASA2 Rabbit pAb at 1:1000. Secondary antibody: HRP Goat Anti-Rabbit IgG (H+L) at 1:5000. Lysates/proteins: 30ug per lane. Blocking buffer: 5% non-fat dry milk in TBST. Detection: ECL Enhanced Kit. Exposure time: 120s.

实验步骤

访问官网浏览详情: www.ablybio.cn