

# SLC32A1 Rabbit pAb

货号: **AYP19648**

## 产品信息

反应	Human,Mouse,Rat
宿主	Rabbit
克隆性	Polyclonal
预测反应	
应用	WB
推荐浓度	<b>WB:</b> 1:500 - 1:2000
理论分子量	57kDa
实测分子量	68kDa
形式	Liquid
保存条件	Store at -20°C. Avoid freeze / thaw cycles. Buffer: PBS with 0.02% sodium azide,50% glycerol,pH7.3.
偶联物	Unconjugated
阳性对照	HepG2,U-251MG,Mouse brain,Mouse pancreas,Mouse liver
细胞定位	Cytoplasmic vesicle membrane,Multi-pass membrane protein
纯化	Affinity purification

## 抗原信息

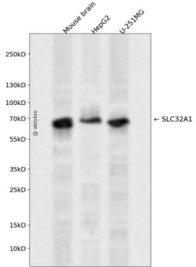
抗原信息	Recombinant fusion protein containing a sequence corresponding to amino acids 1-120 of human SLC32A1 (NP_542119.1).
序列	MATLLRSKLSNVATSVSNKSQAKMSGMFARMGFQAATDEEAVGFHACDDLDFEHRQGLQMDILKAEGEPCGDEGAEA PVEGDIHYQRGSGAPLPPSGSKDQVGGGGFEGGHDKPKITAW

## 靶点信息

研究背景	The protein encoded by this gene is an integral membrane protein involved in gamma-aminobutyric acid (GABA) and glycine uptake into synaptic vesicles. The encoded protein is a member of amino acid/polyamine transporter family II.
基因ID	140679

基因名	SLC32A1
Swiss	Q9H598
别名	SLC32A1;VGAT;VIAAT

## 产品验证



Western blot analysis of SLC32A1 expressed in Mouse brain,HepG2,U-251MG using SLC32A1 Rabbit pAb at 1:1000. Secondary antibody: HRP Goat Anti-Rabbit IgG (H+L) at 1:5000. Lysates/proteins: 30ug per lane. Blocking buffer: 5% non-fat dry milk in TBST. Detection: ECL Enhanced Kit. Exposure time: 120 S.

## 实验步骤

访问官网浏览详情: [www.ablybio.cn](http://www.ablybio.cn)