

Gm13125 Rabbit pAb

货号: AYP19646

产品信息

反应	Human,Mouse,Rat
宿主	Rabbit
克隆性	Polyclonal
预测反应	
应用	WB IHC
推荐浓度	WB: 1:500 - 1:2000 IHC: 1:50 - 1:200
理论分子量	55kDa
实测分子量	55kDa
形式	Liquid
保存条件	Store at -20°C. Avoid freeze / thaw cycles. Buffer: PBS with 0.02% sodium azide,50% glycerol,pH7.3.
偶联物	Unconjugated
阳性对照	Mouse heart,Rat heart
细胞定位	cytoplasm
纯化	Affinity purification

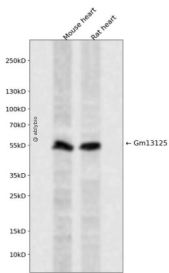
抗原信息

抗原信息	Recombinant fusion protein containing a sequence corresponding to amino acids 1-477 of mouse Gm13125 (NP_001108549.1).
序列	MSSKPLLTQELAAQNILRNEALAISALQYLPELFLPQLLKQAYDGNHLKVLRAIVSSWPFPRPLGALKKRTPYLETQLQVVLEEVDKLLIQEVHPREYKLEVLDRSVGQNYLNVWPGAMDDWLPKTTQTDPCCSKTVMTQPLKVLVDLQLNNRGQSRLFSYLQVWSDRRKGLLQLYCNKLQIWSPSQQNYRKLSQKVNLDYVETLGLHSSCSPSFLNLFAPYLRQMRNLRKLALSNIREEHIIISPEKRRCIITRFTLQILKLESQKLHLDVAVCFLEGHLDQLLGSVKTSLDELAVTHCNLSVSEWSHFSEFPCVSQQLQNLNLRVRLTGLSPEPLQVLLVKAGPTLVALDLEDCHLEDGQLYAILPALSCKFKLTKFSFYGNQISMAMKDLLHHTASLIHLRLELYPVPQDSYDYHGTPLMQRMQHQHCELMNLLKTRNPNPGRVFFGTDRCDCQCCNRYIYNKTIMCNCRRSY

靶点信息

研究背景	Predicted to enable ubiquitin ligase-substrate adaptor activity. Predicted to be part of Cul2-RING ubiquitin ligase complex. Predicted to be active in cytoplasm. Orthologous to several human genes including PRAMEF1 (PRAME family member 1); PRAMEF10 (PRAME family member 10); and PRAMEF11 (PRAME family member 11).
基因ID	627009
基因名	
Swiss	Q5VT98
别名	PRAMEF20;PRAMEF21;Gm13125

产品验证



Western blot analysis of Gm13125 expressed in Mouse heart,Rat heart using Gm13125 Rabbit pAb at 1:1000. Secondary antibody: HRP Goat Anti-Rabbit IgG (H+L) at 1:5000. Lysates/proteins: 30ug per lane. Blocking buffer: 5% non-fat dry milk in TBST. Detection: ECL Enhanced Kit. Exposure time: 120s.

实验步骤

访问官网浏览详情: www.ablybio.cn