

LSM1 Rabbit pAb

货号: **AYP19617**

产品信息

反应	Human,Mouse
宿主	Rabbit
克隆性	Polyclonal
预测反应	
应用	WB IF/ICC
推荐浓度	WB: 1:500 - 1:2000 IF/ICC: 1:50 - 1:200
理论分子量	15kDa
实测分子量	17kDa
形式	Liquid
保存条件	Store at -20°C. Avoid freeze / thaw cycles. Buffer: PBS with 0.01% thiomersal,50% glycerol,pH7.3.
偶联物	Unconjugated
阳性对照	Raji,293T,HeLa
细胞定位	Nucleus
纯化	Affinity purification

抗原信息

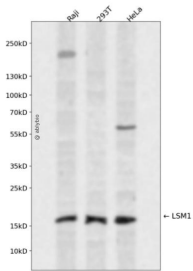
抗原信息	Recombinant fusion protein containing a sequence corresponding to amino acids 1-133 of human LSM1 (NP_055277.1).
序列	MNYMPGTASLIEDIDKKHLVLLRDGRTLIGFLRSIDQFANLVLHQTVERIHVGKKYGDIPRGIFVVRGENVVLLGEIDLEKES DTPLQQVSIEEILEEQRVEQQTLEAEKLVQALKDRGLSIPRADTLDEY

靶点信息

研究背景	This gene encodes a member of the LSm family of RNA-binding proteins. LSm proteins form stable heteromers that bind specifically to the 3'-terminal oligo(U) tract of U6 snRNA and may play a role in pre-mRNA splicing by mediating U4/U6 snRNP formation. Increased expression of this gene may play a role in cellular transformation and the progression of several malignancies including lung cancer, mesothelioma and breast cancer. Alternatively spliced transcript variants have been observed for this gene, and a pseudogene of this gene is located on the short arm of chromosome 9.
------	--

基因ID	27257
基因名	LSM1
Swiss	O15116
别名	LSM1;CASM;YJL124C

产品验证



Western blot analysis of LSM1 expressed in Raji,293T,HeLa using LSM1 Rabbit pAb at 1:1000. Secondary antibody: HRP Goat Anti-Rabbit IgG (H+L) at 1:5000. Lysates/proteins: 30ug per lane. Blocking buffer: 5% non-fat dry milk in TBST. Detection: ECL Enhanced Kit. Exposure time: 120s.

实验步骤

访问官网浏览详情: www.ablybio.cn