

# ONECUT1 Rabbit pAb

货号: **AYP19608**

## 产品信息

反应	Human,Mouse,Rat
宿主	Rabbit
克隆性	Polyclonal
预测反应	
应用	WB
推荐浓度	<b>WB:</b> 1:500 - 1:1000
理论分子量	51kDa
实测分子量	51KDa
形式	Liquid
保存条件	Store at -20°C. Avoid freeze / thaw cycles. Buffer: PBS with 0.01% thiomersal,50% glycerol,pH7.3.
偶联物	Unconjugated
阳性对照	HepG2,Mouse brain
细胞定位	Nucleus
纯化	Affinity purification

## 抗原信息

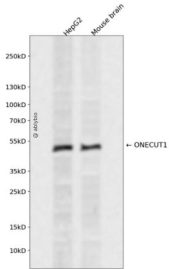
抗原信息	Recombinant fusion protein containing a sequence corresponding to amino acids 167-292 of human ONE CUT1 (NP_004489.1).
序列	PYHKDVAGMGQSLSPSSSGLGSIHNSQQGLPHYAHPGAAMPTDKMLTPNGFEAHPAMLGRHGELHTPTSAGMVPI NGLPPHHPAHLNAQHGQLLGTAREPNPSVTGAQVSNQSNQGMEEI

## 靶点信息

研究背景	This gene encodes a member of the Cut homeobox family of transcription factors. Expression of the encoded protein is enriched in the liver, where it stimulates transcription of liver-expressed genes, and antagonizes glucocorticoid-stimulated gene transcription. This gene may influence a variety of cellular processes including glucose metabolism, cell cycle regulation, and it may also be associated with cancer. Alternative splicing results in multiple transcript variants.
基因ID	3175

基因名	ONECUT1
Swiss	Q9UBC0
别名	ONECUT1;HNF-6;HNF6;HNF6A

## 产品验证



Western blot analysis of ONECUT1 expressed in HepG2, Mouse brain using ONECUT1 Rabbit pAb at 1:1000. Secondary antibody: HRP Goat Anti-Rabbit IgG (H+L) at 1:5000. Lysates/proteins: 30ug per lane. Blocking buffer: 5% non-fat dry milk in TBST. Detection: ECL Enhanced Kit. Exposure time: 120s.

## 实验步骤

访问官网浏览详情: [www.ablybio.cn](http://www.ablybio.cn)