

MRPL42 Rabbit pAb

货号: **AYP19592**

产品信息

反应	Human,Mouse
宿主	Rabbit
克隆性	Polyclonal
预测反应	
应用	WB
推荐浓度	WB: 1:1000 - 1:2000
理论分子量	16kDa
实测分子量	16kDa
形式	Liquid
保存条件	Store at -20°C. Avoid freeze / thaw cycles. Buffer: PBS with 0.01% thiomersal,50% glycerol,pH7.3.
偶联物	Unconjugated
阳性对照	U-87MG,HeLa,Raji,HepG2,U-251MG,Mouse kidney
细胞定位	Mitochondrion
纯化	Affinity purification

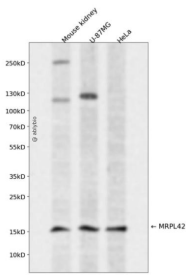
抗原信息

抗原信息	Recombinant fusion protein containing a sequence corresponding to amino acids 1-142 of human MRPL4 2 (NP_054769.1).
序列	MAVAAVKQVMSKRTILKHLFPVQNGALYCVCHKSTYSPLPDDYNCNVELALTS DGRITVCYHPSVDIPYEHTKPIPRDPVH NNEETHDQVLKTRLEEKVEHLEEGPMIEQLSKMFFTTKRWYPHGRYHRCRKNLNPPKDR

靶点信息

研究背景	Mammalian mitochondrial ribosomal proteins are encoded by nuclear genes and help in protein synthesis within the mitochondrion. Mitochondrial ribosomes (mitoribosomes) consist of a small 28S subunit and a large 39S subunit. They have an estimated 75% protein to rRNA composition compared to prokaryotic ribosomes, where this ratio is reversed. Another difference between mammalian mitoribosomes and prokaryotic ribosomes is that the latter contain a 5S rRNA. Among different species, the proteins comprising the mitoribosome differ greatly in sequence, and sometimes in biochemical properties, which prevents easy recognition by sequence homology. This gene encodes a protein identified as belonging to both the 28S and the 39S subunits. Alternative splicing results in multiple transcript variants. Pseudogenes corresponding to this gene are found on chromosomes 4q, 6p, 6q, 7p, and 15q.
基因ID	28977
基因名	MRPL42
Swiss	Q9Y6G3
别名	MRPL42;HSPC204;L31MT;L42MT;MRP-L31;MRP-L42;MRP-S32;MRPL31;MRPS32;PTD007;RPML31;S32MT

产品验证



Western blot analysis of MRPL42 expressed in Mouse kidney,U-87MG,HeLa using MRPL42 Rabbit pAb at 1:1000. Secondary antibody: HRP Goat Anti-Rabbit IgG (H+L) at 1:5000. Lysates/proteins: 30ug per lane. Blocking buffer: 5% non-fat dry milk in TBST. Detection: ECL Enhanced Kit. Exposure time: 120s.

实验步骤

访问官网浏览详情: www.ablybio.cn