

# SLA2 Rabbit pAb

货号: **AYP19589**

## 产品信息

反应	Human
宿主	Rabbit
克隆性	Polyclonal
预测反应	
应用	WB
推荐浓度	<b>WB:</b> 1:500 - 1:2000
理论分子量	20kDa/23kDa/25kDa/28kDa
实测分子量	28kDa
形式	Liquid
保存条件	Store at -20°C. Avoid freeze / thaw cycles. Buffer: PBS with 0.01% thiomersal,50% glycerol,pH7.3.
偶联物	Unconjugated
阳性对照	K-562,A-431,HT-29
细胞定位	Cell membrane,Cytoplasm,Cytoplasmic vesicle
纯化	Affinity purification

## 抗原信息

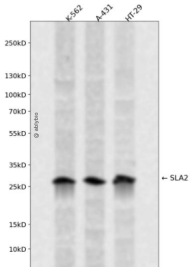
抗原信息	Recombinant fusion protein containing a sequence corresponding to amino acids 1-160 of human SLA2 (NP_115590.1).
序列	MGSLPSRRKSLPSPSLSSSVQGGPVTMEAERSKATAVALGSPAGGPAELSLRLGEPLTIVSEGDWWTVLSEVSGREYNIPSVHVAKVSHGWLYEGLSREKAEELLLLPGNPGGAFLIRESQTRRGSYSLVRLSRPASWDRIIRHYRIHCLDNGWLYI

## 靶点信息

研究背景	This gene encodes a member of the SLAP family of adapter proteins. The encoded protein may play an important receptor-proximal role in downregulating T and B cell-mediated responses and inhibits antigen receptor-induced calcium mobilization. This protein interacts with Cas-Br-M (murine) ecotropic retroviral transforming sequence c. Two transcript variants encoding distinct isoforms have been identified for this gene.
基因ID	84174

基因名	SLA2
Swiss	Q9H6Q3
别名	SLA2;C20orf156;MARS;SLAP-2;SLAP2

## 产品验证



Western blot analysis of SLA2 expressed in K-562,A-431,HT-29 using SLA2 Rabbit pAb at 1:1000. Secondary antibody: HRP Goat Anti-Rabbit IgG (H+L) at 1:5000. Lysates/proteins: 30ug per lane. Blocking buffer: 5% non-fat dry milk in TBST. Detection: ECL Enhanced Kit. Exposure time: 120s.

## 实验步骤

访问官网浏览详情: [www.ablybio.cn](http://www.ablybio.cn)