

TCL1B Rabbit pAb

货号: **AYP19587**

产品信息

反应	Human,Mouse,Rat
宿主	Rabbit
克隆性	Polyclonal
预测反应	
应用	WB IF/ICC
推荐浓度	WB: 1:500 - 1:1000 IF/ICC: 1:50 - 1:200
理论分子量	14kDa
实测分子量	16KDa
形式	Liquid
保存条件	Store at -20°C. Avoid freeze / thaw cycles. Buffer: PBS with 0.01% thiomersal,50% glycerol,pH7.3.
偶联物	Unconjugated
阳性对照	293T,K-562
细胞定位	
纯化	Affinity purification

抗原信息

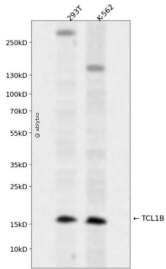
抗原信息	Recombinant fusion protein containing a sequence corresponding to amino acids 1-128 of human TCL1B (NP_004909.1).
序列	MASEASVRLGVPPGRLWIQRPGIYEDEEGRTWVTVVVRFNPSRREWARASQGSRYEPSITVHLWQMAVHTRELLSSGQM PFSQLPAVWQLYGRKYRAADSSFWEIADHGQIDSMEQLVLTYQPERKD

靶点信息

研究背景	Enhances the phosphorylation and activation of AKT1 and AKT2.
基因ID	9623
基因名	TCL1B

Swiss	O95988
别名	TCL1B;SYN-1;TML1

产品验证



Western blot analysis of TCL1B expressed in 293T,K-562 using TCL1B Rabbit pAb at 1:1000. Secondary antibody: HRP Goat Anti-Rabbit IgG (H+L) at 1:5000. Lysates/proteins: 30ug per lane. Blocking buffer: 5% non-fat dry milk in TBST. Detection: ECL Enhanced Kit. Exposure time: 120s.

实验步骤

访问官网浏览详情: www.ablybio.cn