

SEMG2 Rabbit pAb

货号: **AYP19582**

产品信息

反应	Human,Mouse
宿主	Rabbit
克隆性	Polyclonal
预测反应	
应用	WB
推荐浓度	WB: 1:500 - 1:2000
理论分子量	65kDa
实测分子量	75kDa
形式	Liquid
保存条件	Store at -20°C. Avoid freeze / thaw cycles. Buffer: PBS with 0.01% thiomersal,50% glycerol,pH7.3.
偶联物	Unconjugated
阳性对照	HeLa
细胞定位	Secreted
纯化	Affinity purification

抗原信息

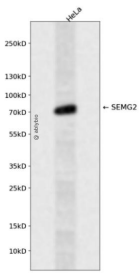
抗原信息	Recombinant fusion protein containing a sequence corresponding to amino acids 383-582 of human SEMG2 (NP_002999.1).
序列	HGKSQNQVRIPSQAQEYGHKENKISYQSSSTEERRLNSEKDVQKGVSKGSISIQTEEKIHGKSQNQVTIPSQDQEHGHK ENKMSYQSSSTEERRLNYYGGKSTQKDVSSISFQIEKLVEGKSQIQTPNPNQDQWSGQNAKGKSGQSADSKQDLLSH EQKGRYKQESSESHNIVITEHEVAQDDHLTQQYNEDRNPIST

靶点信息

研究背景	The secreted protein encoded by this gene is involved in the formation of a gel matrix that encases ejaculated spermatozoa. Proteolysis by the prostate-specific antigen (PSA) breaks down the gel matrix and allows the spermatozoa to move more freely. The encoded protein is found in lesser abundance than a similar semenogelin protein. An antibacterial activity has been found for an antimicrobial peptide isolated from this protein. The genes encoding these two semenogelin proteins are found in a cluster on chromosome 20.
------	---

基因ID	6407
基因名	SEMG2
Swiss	Q02383
别名	SEMG2;SGII

产品验证



Western blot analysis of SEMG2 expressed in HeLa using SEMG2 Rabbit pAb at 1:1000. Secondary antibody: HRP Goat Anti-Rabbit IgG (H+L) at 1:5000. Lysates/proteins: 30ug per lane. Blocking buffer: 5% non-fat dry milk in TBST. Detection: ECL Enhanced Kit. Exposure time: 120s.

实验步骤

访问官网浏览详情: www.ablybio.cn