

PPM1J Rabbit pAb

货号: **AYP19575**

产品信息

反应	Human,Mouse
宿主	Rabbit
克隆性	Polyclonal
预测反应	
应用	WB
推荐浓度	WB: 1:500 - 1:2000
理论分子量	33kDa/54kDa
实测分子量	60kDa
形式	Liquid
保存条件	Store at -20°C. Avoid freeze / thaw cycles. Buffer: PBS with 0.01% thiomersal,50% glycerol,pH7.3.
偶联物	Unconjugated
阳性对照	SH-SY5Y,HeLa,Mouse brain
细胞定位	
纯化	Affinity purification

抗原信息

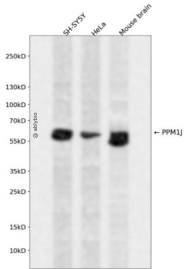
抗原信息	Recombinant fusion protein containing a sequence corresponding to amino acids 130-260 of human PPM1J (NP_005158.5).
序列	VEGRRSVTGVPREPSRGQGLCFYIWGLFDGHAGGGAEMASRLLHRHIREQLKDLVEILQDPSPPPLCLPTTPGTPDSSD PSHLLGPQSCWSSQKEVSHESLVGAVENAFQLMDEQMARERRGHQVEGGC

靶点信息

研究背景	This gene encodes the serine/threonine protein phosphatase. The mouse homolog of this gene apparently belongs to the protein phosphatase 2C family of genes. The exact function of this gene is not yet known.
基因ID	333926
基因名	PPM1J

Swiss	Q5JR12
别名	PPM1J;PP2CZ;PP2Czeta;PPP2CZ

产品验证



Western blot analysis of PPM1J expressed in SH-SY5Y, HeLa, Mouse brain using PPM1J Rabbit pAb at 1:1000. Secondary antibody: HRP Goat Anti-Rabbit IgG (H+L) at 1:5000. Lysates/proteins: 30ug per lane. Blocking buffer: 5% non-fat dry milk in TBST. Detection: ECL Enhanced Kit. Exposure time: 120s.

实验步骤

访问官网浏览详情: www.ablybio.cn