

POLE2 Rabbit pAb

货号: **AYP19574**

产品信息

反应	Human,Mouse
宿主	Rabbit
克隆性	Polyclonal
预测反应	
应用	WB
推荐浓度	WB: 1:500 - 1:2000
理论分子量	56kDa/59kDa
实测分子量	59kDa
形式	Liquid
保存条件	Store at -20°C. Avoid freeze / thaw cycles. Buffer: PBS with 0.01% thiomersal,50% glycerol,pH7.3.
偶联物	Unconjugated
阳性对照	HeLa,Mouse heart
细胞定位	Nucleus
纯化	Affinity purification

抗原信息

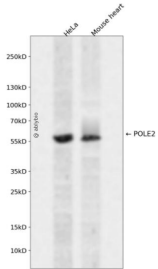
抗原信息	Recombinant fusion protein containing a sequence corresponding to amino acids 1-290 of human POLE2 (NP_002683.2).
序列	MAPERLRSRALSFAKLRGLLLRGEAIKYLTEALQSISELELEDKLEKIINAVEKQPLSSNMIERSVVEAAVQEQCSQSVDETHV FNIIGAFDIPRFVYNSERKKFLPLLMTNHPAPNLFGTTPRDKAEMFRERYTILHQRTHRHELFTPPVIGSHPDESGSKFQLKTIE TLLGSTTKIGDAIVLGMITQLKEGKFFLEDPTGTVQLDLSKAQFHSGLYTEACFVLAEGWFEDQVFHVNAFGFPPTEPSSTT RAYYGNIINFFGGPSNTSVKTSALKKQLEENKDAMFVFL

靶点信息

研究背景	DNA polymerase epsilon, which is involved in DNA repair and replication, is composed of a large catalytic subunit and a small accessory subunit. The protein encoded by this gene represents the small subunit (B) . Defects in this gene have been linked to colorectal cancer and to combined immunodeficiency.
基因ID	5427

基因名	POLE2
Swiss	P56282
别名	POLE2;DPE2

产品验证



Western blot analysis of POLE2 expressed in HeLa, Mouse heart using POLE2 Rabbit pAb at 1:1000. Secondary antibody: HRP Goat Anti-Rabbit IgG (H+L) at 1:5000. Lysates/proteins: 30ug per lane. Blocking buffer: 5% non-fat dry milk in TBST. Detection: ECL Enhanced Kit. Exposure time: 120s.

实验步骤

访问官网浏览详情: www.ablybio.cn